

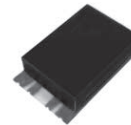
MODULATORS I & Q SUB-HARMONIC

8 PIN - RELAY HEADER



RF OUTPUT FREQUENCY (MHz)	CARRIER FREQUENCY (MHz)	NOMINAL CARRIER POWER (dBm)	CONVERSION LOSS (dB) MAX	SSB REJECTION (dB) MIN	CARRIER REJECTION (dB) MIN	HARMONIC REJECTION (dB) MIN	PACKAGE	PIN-OUT (See Below)	MODEL
810 - 830	405 - 415	+10	11.0	30	30	33	102	1	HSMR-810
825 - 875	412 - 438	+10	11.0	30	30	33	102	1	HSMR-825
869 - 894	434 - 447	+10	11.0	30	30	33	102	1	HSMR-869
935 - 970	467 - 485	+10	11.0	30	30	33	102	1	HSMR-935
1000 - 1070	500 - 535	+10	11.0	30	30	33	102	1	HSMR-1000
1200 - 1280	600 - 640	+10	11.0	30	30	33	102	1	HSMR-1200
1400 - 1500	700 - 750	+10	11.0	30	30	33	102	1	HSMR-1400
1500 - 1650	750 - 825	+10	11.0	30	30	33	102	1	HSMR-1500
1800 - 1900	900 - 950	+10	12.0	25	25	30	102	1	HSMR-1800
1805 - 1880	902 - 940	+10	12.0	25	25	30	102	1	HSMR-1805
1920 - 2000	960 - 1000	+10	12.0	25	25	30	102	1	HSMR-1930
2000 - 2200	1000 - 1100	+10	12.0	25	25	30	102	1	HSMR-2000
2200 - 2500	1100 - 1250	+10	12.0	25	25	30	102	1	HSMR-2250

LEADLESS SURFACE-MOUNT MODELS



RF OUTPUT FREQUENCY (MHz)	CARRIER FREQUENCY (MHz)	NOMINAL CARRIER POWER (dBm)	CONVERSION LOSS (dB) MAX	SSB REJECTION (dB) MIN	CARRIER REJECTION (dB) MIN	HARMONIC REJECTION (dB) MIN	PACKAGE	PIN-OUT (See Below)	MODEL
810 - 830	405 - 415	+10	11.0	30	30	33	161	2	HSMD-810
825 - 875	412 - 438	+10	11.0	30	30	33	161	2	HSMD-825
869 - 894	434 - 447	+10	11.0	30	30	33	161	2	HSMD-869
935 - 970	467 - 485	+10	11.0	30	30	33	161	2	HSMD-935
1000 - 1070	500 - 535	+10	11.0	30	30	33	161	2	HSMD-1000
1200 - 1280	600 - 640	+10	11.0	30	30	33	161	2	HSMD-1200
1400 - 1500	700 - 750	+10	11.0	30	30	33	161	2	HSMD-1400
1500 - 1650	750 - 825	+10	11.0	30	30	33	161	2	HSMD-1500
1800 - 1900	900 - 950	+10	12.0	25	25	30	161	2	HSMD-1800
1805 - 1880	902 - 940	+10	12.0	25	25	30	161	2	HSMD-1805
1920 - 2000	960 - 1000	+10	12.0	25	25	30	161	2	HSMD-1930
2000 - 2200	1000 - 1100	+10	12.0	25	25	30	161	2	HSMD-2000
2200 - 2500	1100 - 1250	+10	12.0	25	25	30	161	2	HSMD-2250

Notes:

- USB is suppressed when MOD.1 is +90° ref to MOD. 2.
- LSB is suppressed when MOD.1 is -90° ref to MOD. 2.
- 1 dB Comp. Point: -5 dBm (Nom)
- Modulation Frequency = DC to 20 MHz
- Harmonic and Carrier rejection is guaranteed with -10 dBm input at MOD. 1 and MOD. 2.
- Conversion Loss is the difference between total power of both modulation inputs and desired sideband output.

This product is protected under United States Patent Number 5,416,449.

PIN-OUT TABLE

	CARRIER	MOD.1	MOD.2	SSB OUTPUT	CASE GND
#1	8	3	4	1	All Other
#2	3	1	4	2	All Other

For pin location and package outline drawings, see back pages.