

DIRECTIONAL COUPLER

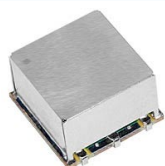
MODEL KDS-20-225

OPTIMIZED BANDWIDTH

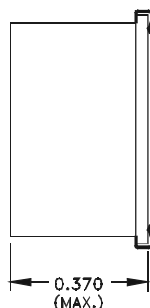
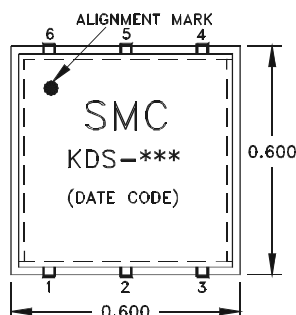
225 - 400 MHz

SPECIFICATIONS:

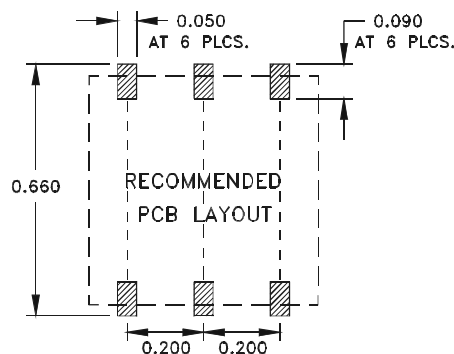
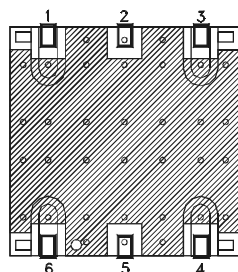
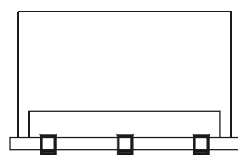
Operating Frequency:	225 - 400 MHz	Directivity:	18 dB (Min)
Coupling:	20.0 dB \pm 1.0 dB (Nom)		25 dB (Typ)
Coupling Flatness:	\pm 0.5 dB	VSWR:	1.20:1 (Typ)
Mainline Loss:	0.2 dB (Typ)		1.35:1 (Max)
	0.4 dB (Max)	Impedance:	50 Ohms
Input Power	50 Watts (CW)	Operating Temp. Range:	-40° to +70°C



MECHANICAL OUTLINE: 255



PIN-OUT	
Input	6
Output	1
Fwd. Coupled	4
No Connection	3
Case Ground	2,5



DIRECTIONAL COUPLER

MODEL KDS-20-225

OPTIMIZED BANDWIDTH

225 - 400 MHz

PERFORMANCE PLOTS

