

RF IMPEDANCE TRANSFORMER

SURFACE MOUNT MODEL: TM4-1

WIDE BANDWIDTH

10 - 1000 MHz

FEATURES:

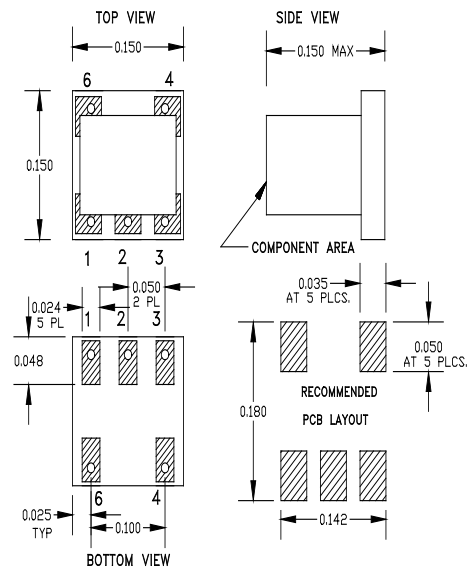
- ▶ Cost Effective
- ▶ Low Loss
- ▶ Small Size, Surface Mount
- ▶ RoHS Compliant
- ▶ Lead Free REL-PRO® Technology



SPECIFICATIONS

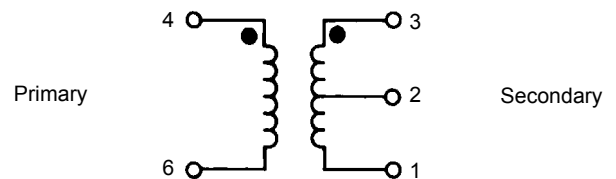
Frequency	10 - 1000 MHz		
Impedance Ratio	1:4		
Center Tap	Primary	Secondary	
	No	Yes	
Insertion Loss (dB)	Frequency (MHz)	Typ.	Max.
	10 - 100	2.1	2.7
	100 - 500	1.9	2.5
	500 - 1000	2.0	2.6
Return Loss	12 dB (Typ.)		
Input Power	1 Watt (Max.)		
DC Current	50 mA (Max.)		
Impedance	50 Ohms (Nom.)		
Operating Temperature Range	-55 to +85 °C		

Package # 311



PORT LOCATION

Pri. Dot	Pri.	Sec. Dot	Sec.	Sec. CT
4	6	3	1	2



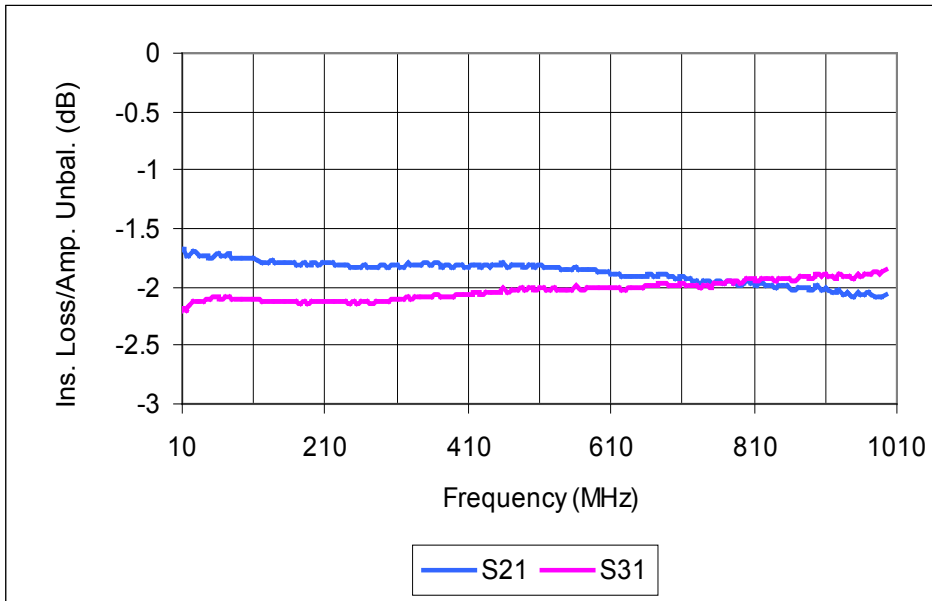
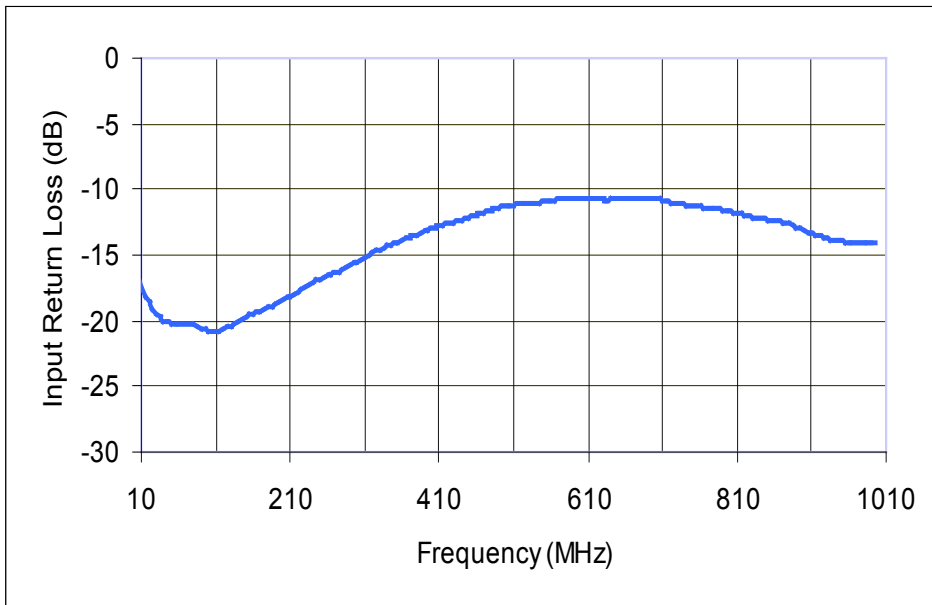
RF IMPEDANCE TRANSFORMER

SURFACE MOUNT MODEL: TM4-1

WIDE BANDWIDTH

10 - 1000 MHz

PERFORMANCE PLOTS

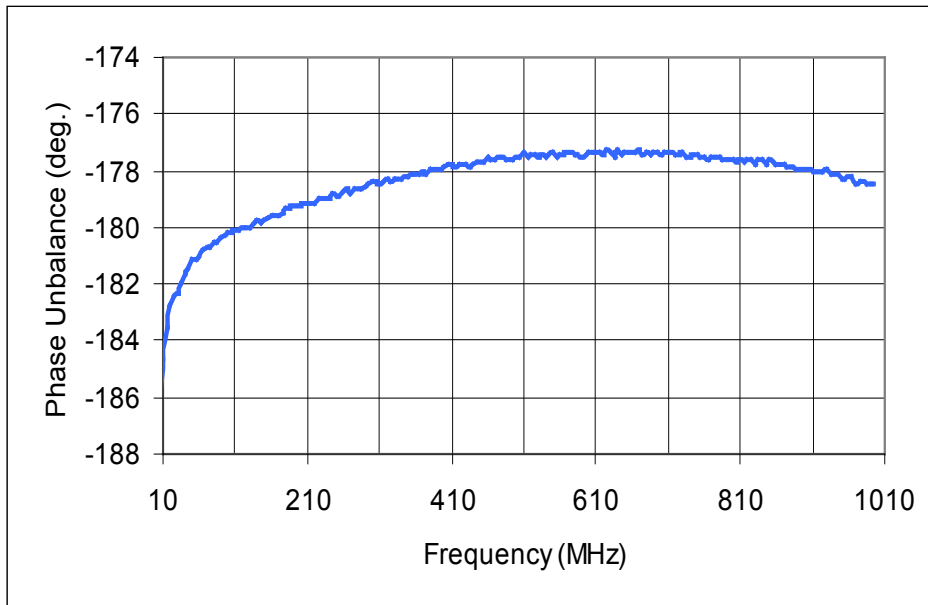


RF IMPEDANCE TRANSFORMER

SURFACE MOUNT MODEL: TM4-1

WIDE BANDWIDTH

10 - 1000 MHz



PERFORMANCE PLOTS