

74ACT11867

SYNCHRONOUS 8-BIT UP/DOWN BINARY COUNTER WITH ASYNCHRONOUS CLEAR

SCAS178A – DECEMBER 1991 – REVISED FEBRUARY 1998

- Inputs Are TTL-Voltage Compatible
- Asynchronous Clear
- Fully Independent Clock Circuit Simplifies Use
- Flow-Through Architecture Optimizes PCB Layout
- Center-Pin V_{CC} and GND Configurations Minimize High-Speed Switching Noise
- **EPIC™** (Enhanced-Performance Implanted CMOS) 1- μ m Process
- 500-mA Typical Latch-Up Immunity at 125°C

description

The 74ACT11867 is a synchronous presettable binary counter featuring an internal carry look-ahead for cascading in high-speed counting applications. Synchronous operation is provided by having all flip-flops clocked simultaneously so that the outputs change coincident with each other when so instructed by the count-enable inputs and internal gating. This mode of operation helps eliminate the output counting spikes that are normally associated with asynchronous (ripple-clock) counters. A buffered clock (CLK) input triggers the eight flip-flops on the rising (positive-going) edge of the clock waveform.

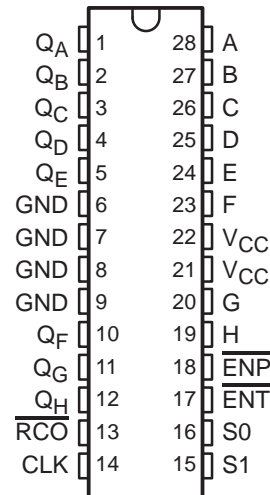
The counters are fully programmable; that is, the outputs can each be preset to either logic level. The load-mode circuitry allows parallel loading of the cascaded counters. As loading is synchronous, selecting the load mode disables the counter and causes the outputs to agree with the data inputs after the next clock rising edge.

The carry look-ahead circuitry is provided for cascading counters for n-bit synchronous applications without additional gating. This is done with two count-enable inputs and a carry output. Both count-enable (\overline{ENP} and \overline{ENT}) inputs must be low to count. The direction of the count is determined by the levels of the select (S0 and S1) inputs (see the function table). Input \overline{ENT} is fed forward to enable the ripple-carry (\overline{RCO}) output. \overline{RCO} then produces a low-level pulse while the count is zero (all outputs low) when counting down or 255 during counting up (all outputs high). This low-level overflow carry pulse can be used to enable successive cascaded stages. Transitions at \overline{ENP} and \overline{ENT} are allowed regardless of the level of the clock input.

These counters feature a fully independent clock circuit. Whenever \overline{ENP} and/or \overline{ENT} is taken high, \overline{RCO} either goes high or remains high. The function of the counter (whether enabled, disabled, loading, or counting) is dictated solely by the conditions meeting the stable setup and hold times.

The 74ACT11867 is characterized for operation from –40°C to 85°C.

DW PACKAGE
(TOP VIEW)



Please be aware that an important notice concerning availability, standard warranty, and use in critical applications of Texas Instruments semiconductor products and disclaimers thereto appears at the end of this data sheet.

EPIC is a trademark of Texas Instruments Incorporated.

PRODUCTION DATA information is current as of publication date. Products conform to specifications per the terms of Texas Instruments standard warranty. Production processing does not necessarily include testing of all parameters.



POST OFFICE BOX 655303 • DALLAS, TEXAS 75265

Copyright © 1998, Texas Instruments Incorporated

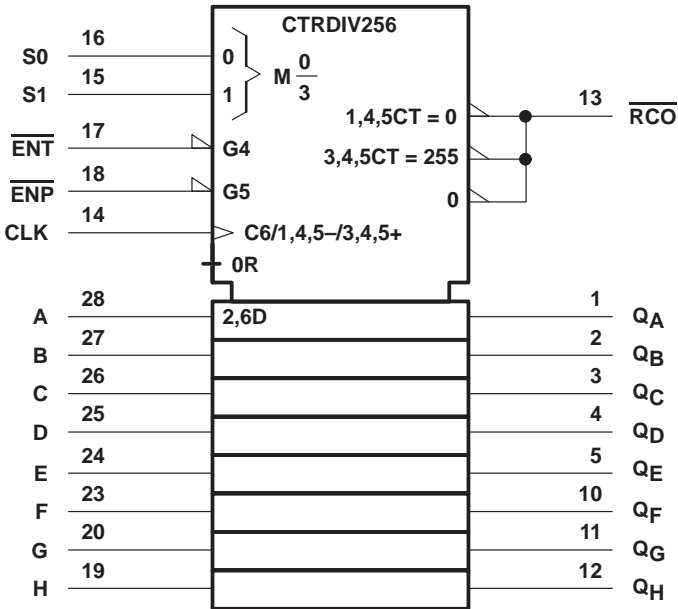
74ACT11867
SYNCHRONOUS 8-BIT UP/DOWN BINARY COUNTER
WITH ASYNCHRONOUS CLEAR

SCAS178A – DECEMBER 1991 – REVISED FEBRUARY 1998

MODE FUNCTION TABLE

S1	S0	FUNCTION
L	L	Clear
L	H	Count down
H	L	Load
H	H	Count up

logic symbol†

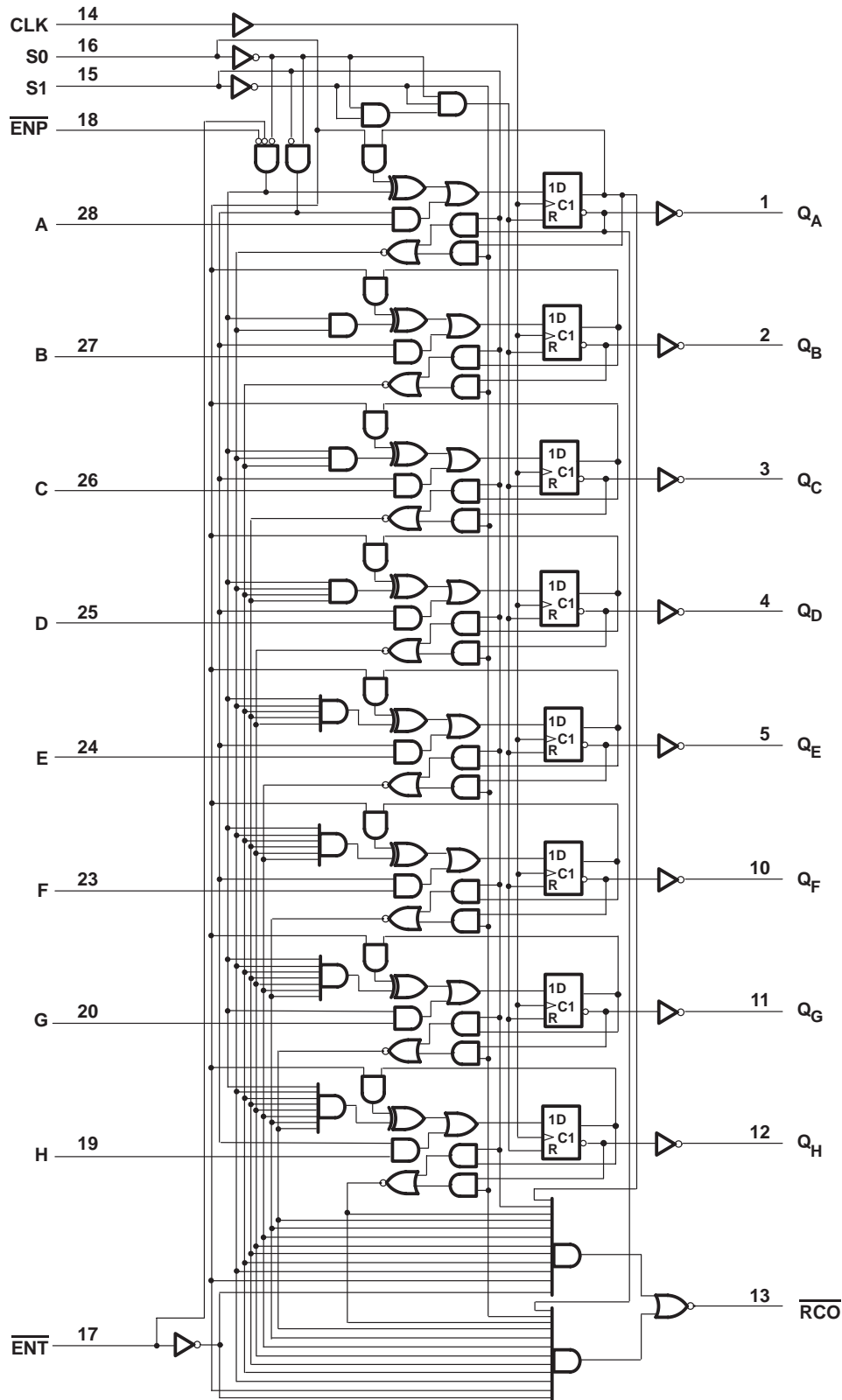


† This symbol is in accordance with ANSI/IEEE Std 91-1984 and IEC Publication 617-12.

74ACT11867
SYNCHRONOUS 8-BIT UP/DOWN BINARY COUNTER
WITH ASYNCHRONOUS CLEAR

SCAS178A – DECEMBER 1991 – REVISED FEBRUARY 1998

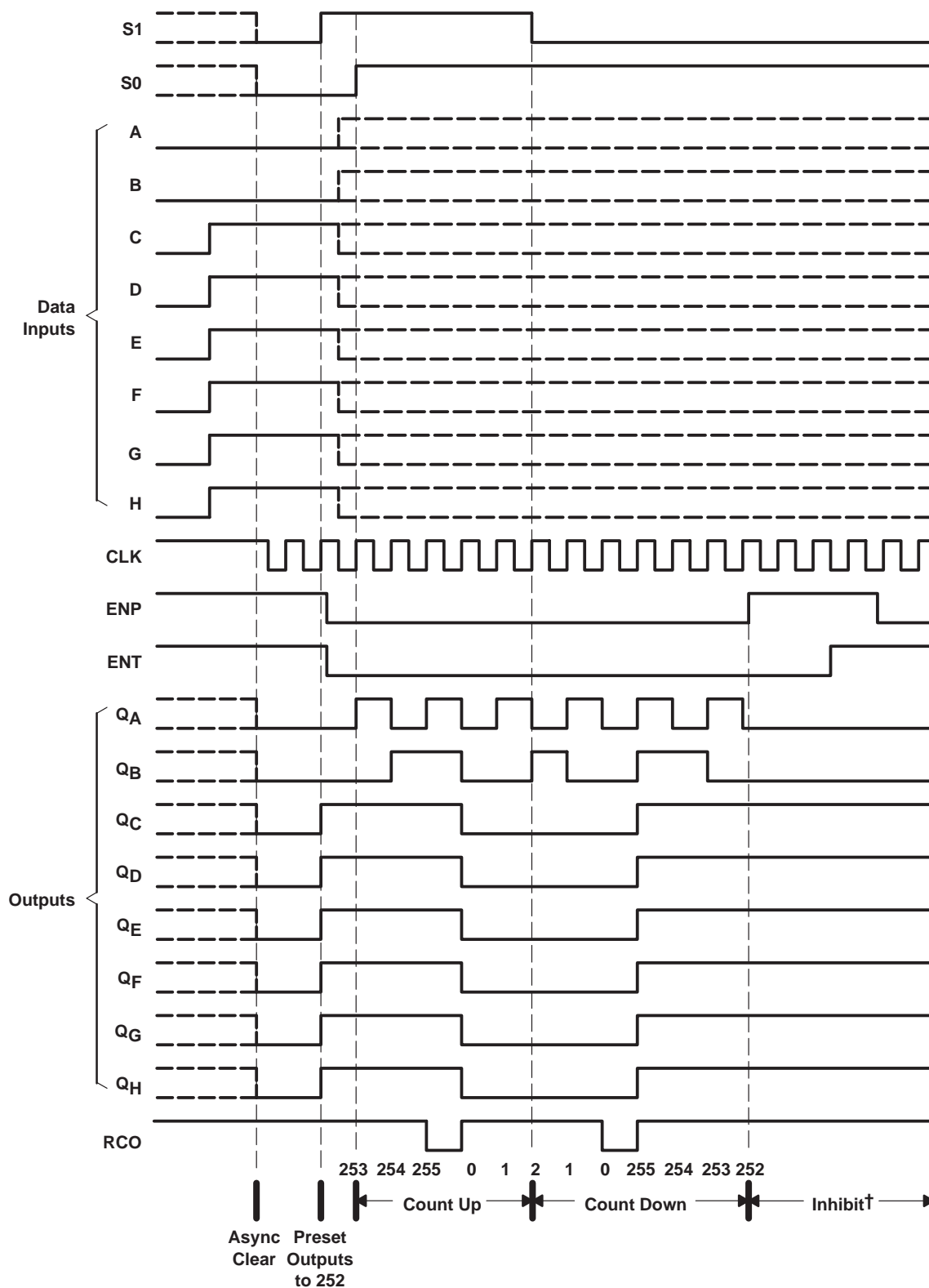
logic diagram (positive logic)



74ACT11867 SYNCHRONOUS 8-BIT UP/DOWN BINARY COUNTER WITH ASYNCHRONOUS CLEAR

SCAS178A – DECEMBER 1991 – REVISED FEBRUARY 1998

output sequence



† $\overline{\text{ENT}}$ and $\overline{\text{ENP}}$ must both be low for counting to occur.



POST OFFICE BOX 655303 • DALLAS, TEXAS 75265

74ACT11867
**SYNCHRONOUS 8-BIT UP/DOWN BINARY COUNTER
 WITH ASYNCHRONOUS CLEAR**

SCAS178A – DECEMBER 1991 – REVISED FEBRUARY 1998

absolute maximum ratings over operating free-air temperature range (unless otherwise noted)[†]

Supply voltage range, V_{CC}	–0.5 V to 7 V
Input voltage range, V_I (see Note 1)	–0.5 V to $V_{CC} + 0.5$ V
Output voltage range, V_O (see Note 1)	–0.5 V to $V_{CC} + 0.5$ V
Input clamp current, I_{IK} ($V_I < 0$ or $V_I > V_{CC}$)	±20 mA
Output clamp current, I_{OK} ($V_O < 0$ or $V_O > V_{CC}$)	±50 mA
Continuous output current, I_O ($V_O = 0$ to V_{CC})	±50 mA
Continuous current through V_{CC} or GND	±225 mA
Package thermal impedance, θ_{JA} (see Note 2): DW package	78°C/W
Storage temperature range, T_{stg}	–65°C to 150°C

[†] Stresses beyond those listed under “absolute maximum ratings” may cause permanent damage to the device. These are stress ratings only, and functional operation of the device at these or any other conditions beyond those indicated under “recommended operating conditions” is not implied. Exposure to absolute-maximum-rated conditions for extended periods may affect device reliability.

- NOTES: 1. The input and output voltage ratings may be exceeded if the input and output clamp-current ratings are observed.
 2. The package thermal impedance is calculated in accordance with JESD 51.

recommended operating conditions (see Note 3)

	MIN	NOM	MAX	UNIT
V_{CC} Supply voltage	4.5	5	5.5	V
V_{IH} High-level input voltage	2			V
V_{IL} Low-level input voltage			0.8	V
V_I Input voltage	0		V_{CC}	V
V_O Output voltage	0		V_{CC}	V
I_{OH} High-level output current			–24	mA
I_{OL} Low-level output current			24	mA
$\Delta t/\Delta v$ Input transition rise or fall rate	0		10	ns/V
T_A Operating free-air temperature	–40		85	°C

NOTE 3: All unused inputs of the device must be held at V_{CC} or GND to ensure proper device operation. Refer to the TI application report, *Implications of Slow or Floating CMOS Inputs*, literature number SCBA004.

74ACT11867

SYNCHRONOUS 8-BIT UP/DOWN BINARY COUNTER

WITH ASYNCHRONOUS CLEAR

SCAS178A – DECEMBER 1991 – REVISED FEBRUARY 1998

electrical characteristics over recommended operating free-air temperature range (unless otherwise noted)

PARAMETER	TEST CONDITIONS	V _{CC}	T _A = 25°C			MIN	MAX	UNIT
			MIN	TYP	MAX			
V _{OH}	I _{OH} = -50 µA	4.5 V	4.4			4.4		V
		5.5 V	5.4			5.4		
	I _{OH} = -24 mA	4.5 V	3.94			3.8		
		5.5 V	4.94			4.8		
	I _{OH} = -75 mA†	5.5 V				3.85		
V _{OL}	I _{OL} = 50 µA	4.5 V			0.1		0.1	V
		5.5 V			0.1		0.1	
	I _{OL} = 24 mA	4.5 V			0.36		0.44	
		5.5 V			0.36		0.44	
	I _{OL} = 75 mA†	5.5 V					1.65	
I _I	V _I = V _{CC} or GND	5.5 V			±0.1		±1	µA
I _{CC}	V _I = V _{CC} or GND, I _O = 0	5.5 V			8		80	µA
ΔI _{CC} ‡	One input at 3.4 V, Other inputs at V _{CC} or GND	5.5 V			0.9		1	mA
C _i	V _I = V _{CC} or GND	5 V			4.5			pF

† Not more than one output should be tested at a time, and the duration of the test should not exceed 10 ms.

‡ This is the increase in supply current for each input that is at one of the specified TTL voltage levels rather than 0 V or V_{CC}.

timing requirements over recommended operating free-air temperature range, V_{CC} = 5 V ± 0.5 V (unless otherwise noted) (see Figure 1)

		T _A = 25°C		MIN	MAX	UNIT
		MIN	MAX			
f _{clock}	Clock frequency	0	70	0	70	MHz
t _w	Pulse duration	S0 and S1 low		12	12	ns
		CLK		6.5	6.5	
t _{su} §	Setup time before CLK↑	Data		8	8	ns
		$\overline{\text{ENP}}, \overline{\text{ENT}}$		4	4	
		S0, S1 (load)		11	11	
		S0, S1 (count down)		11	11	
		S0, S1 (count up)		11	11	
t _h	Hold time after CLK↑	Data		1	1	ns
t _{skew}	Skew time between S0 and S1 to avoid inadvertent clear¶	S0 and S1 low		0	0	ns

§ This setup time is required to ensure stable data.

¶ This is the maximum time for which S0 and S1 can be low simultaneously when the device transitions between the load (S1 = H, S0 = L) and count-down (S1 = L, S0 = H) modes.

74ACT11867

SYNCHRONOUS 8-BIT UP/DOWN BINARY COUNTER WITH ASYNCHRONOUS CLEAR

SCAS178A – DECEMBER 1991 – REVISED FEBRUARY 1998

switching characteristics over recommended operating free-air temperature range,
 $V_{CC} = 5\text{ V} \pm 0.5\text{ V}$ (unless otherwise noted) (see Figure 1)

PARAMETER	FROM (INPUT)	TO (OUTPUT)	$T_A = 25^\circ\text{C}$			MIN	MAX	UNIT
			MIN	TYP	MAX			
f_{\max}			70			70		MHz
t_{PLH}	CLK	$\overline{\text{RCO}}$	6	9.9	12.7	6	14.6	ns
t_{PHL}			6.4	10.9	14.2	6.4	16.3	
t_{PLH}	CLK	Q	5	8.9	11.9	5	13.6	ns
t_{PHL}			4.9	9	12.2	4.9	14	
t_{PLH}	$\overline{\text{ENT}}$	$\overline{\text{RCO}}$	3.9	6.8	9.1	3.9	10.5	ns
t_{PHL}			3.1	7	10.2	3.1	11.5	
t_{PHL}	Clear (S0, S1 low)	Q	6.3	11.9	16.6	6.3	19.1	ns
t_{PLH}	S0, S1 (count up/down)	$\overline{\text{RCO}}$	5.5	10.4	15.6	5.5	17.8	ns
t_{PHL}	S0, S1 (count up/down)	$\overline{\text{RCO}}$	5.6	10.1	14.8	5.6	17.2	ns
t_{PHL}	Clear (S0, S1 low)	$\overline{\text{RCO}}$	6.2	11.3	15.6	6.2	17.8	ns

operating characteristics, $V_{CC} = 5\text{ V}$, $T_A = 25^\circ\text{C}$

PARAMETER		TEST CONDITIONS	TYP	UNIT
C_{pd}	Power dissipation capacitance	$C_L = 50\text{ pF}$, $f = 1\text{ MHz}$	62	pF

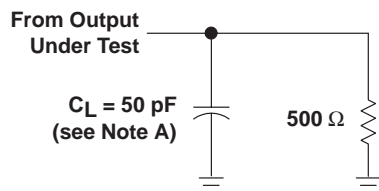
74ACT11867

SYNCHRONOUS 8-BIT UP/DOWN BINARY COUNTER

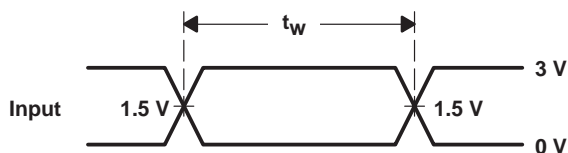
WITH ASYNCHRONOUS CLEAR

SCAS178A – DECEMBER 1991 – REVISED FEBRUARY 1998

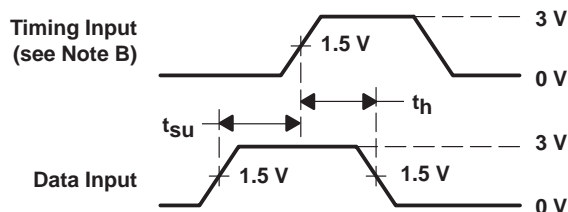
PARAMETER MEASUREMENT INFORMATION



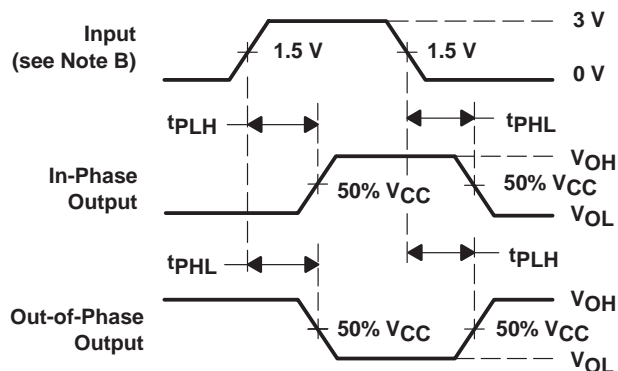
LOAD CIRCUIT



VOLTAGE WAVEFORMS



VOLTAGE WAVEFORMS



VOLTAGE WAVEFORMS

- NOTES: A. C_L includes probe and jig capacitance.
- B. All input pulses are supplied by generators having the following characteristics: $PRR \leq 10 \text{ MHz}$, $Z_O = 50 \Omega$, $t_r = 3 \text{ ns}$, $t_f = 3 \text{ ns}$.
- C. The outputs are measured one at a time with one input transition per measurement.

Figure 1. Load Circuit and Voltage Waveforms

IMPORTANT NOTICE

Texas Instruments and its subsidiaries (TI) reserve the right to make changes to their products or to discontinue any product or service without notice, and advise customers to obtain the latest version of relevant information to verify, before placing orders, that information being relied on is current and complete. All products are sold subject to the terms and conditions of sale supplied at the time of order acknowledgement, including those pertaining to warranty, patent infringement, and limitation of liability.

TI warrants performance of its semiconductor products to the specifications applicable at the time of sale in accordance with TI's standard warranty. Testing and other quality control techniques are utilized to the extent TI deems necessary to support this warranty. Specific testing of all parameters of each device is not necessarily performed, except those mandated by government requirements.

CERTAIN APPLICATIONS USING SEMICONDUCTOR PRODUCTS MAY INVOLVE POTENTIAL RISKS OF DEATH, PERSONAL INJURY, OR SEVERE PROPERTY OR ENVIRONMENTAL DAMAGE ("CRITICAL APPLICATIONS"). TI SEMICONDUCTOR PRODUCTS ARE NOT DESIGNED, AUTHORIZED, OR WARRANTED TO BE SUITABLE FOR USE IN LIFE-SUPPORT DEVICES OR SYSTEMS OR OTHER CRITICAL APPLICATIONS. INCLUSION OF TI PRODUCTS IN SUCH APPLICATIONS IS UNDERSTOOD TO BE FULLY AT THE CUSTOMER'S RISK.

In order to minimize risks associated with the customer's applications, adequate design and operating safeguards must be provided by the customer to minimize inherent or procedural hazards.

TI assumes no liability for applications assistance or customer product design. TI does not warrant or represent that any license, either express or implied, is granted under any patent right, copyright, mask work right, or other intellectual property right of TI covering or relating to any combination, machine, or process in which such semiconductor products or services might be or are used. TI's publication of information regarding any third party's products or services does not constitute TI's approval, warranty or endorsement thereof.