

# SN54LVTZ240, SN74LVTZ240 3.3-V ABT OCTAL BUFFERS/DRIVERS WITH 3-STATE OUTPUTS

SCBS301B – SEPTEMBER 1993 – REVISED JULY 1995

- State-of-the-Art Advanced BiCMOS Technology (ABT) Design for 3.3-V Operation and Low-Static Power Dissipation
- High-Impedance State During Power Up and Power Down
- Support Mixed-Mode Signal Operation (5-V Input and Output Voltages With 3.3-V  $V_{CC}$ )
- Support Unregulated Battery Operation Down to 2.7 V
- Typical  $V_{OLP}$  (Output Ground Bounce)  $< 0.8$  V at  $V_{CC} = 3.3$  V,  $T_A = 25^\circ\text{C}$
- Latch-Up Performance Exceeds 500 mA Per JEDEC Standard JESD-17
- Bus-Hold Data Inputs Eliminate the Need for External Pullup Resistors
- Package Options Include Plastic Small-Outline (DW), Shrink Small-Outline (DB), and Thin Shrink Small-Outline (PW) Packages, Ceramic Chip Carriers (FK), and Ceramic (J) DIPs

## description

These octal buffers and line drivers are designed specifically for low-voltage (3.3-V)  $V_{CC}$  operation, but with the capability to provide a TTL interface to a 5-V system environment.

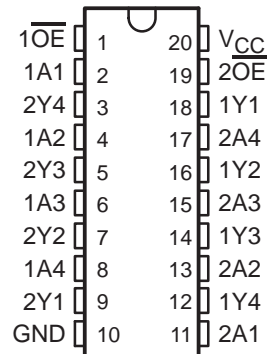
These devices are organized as two 4-bit line drivers with separate output-enable ( $\overline{OE}$ ) inputs. When  $\overline{OE}$  is low, the device passes data from the A inputs to the Y outputs. When  $\overline{OE}$  is high, the outputs are in the high-impedance state.

Active bus-hold circuitry is provided to hold unused or floating data inputs at a valid logic level.

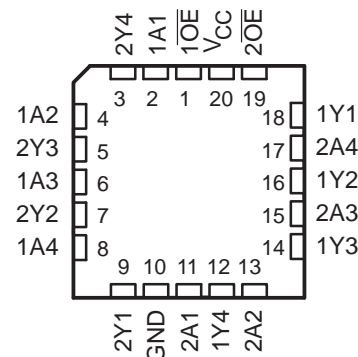
The SN74LVTZ240 is available in TI's shrink small-outline package (DB), which provides the same I/O pin count and functionality of standard small-outline packages in less than half the printed-circuit-board area.

The SN54LVTZ240 is characterized for operation over the full military temperature range of  $-55^\circ\text{C}$  to  $125^\circ\text{C}$ . The SN74LVTZ240 is characterized for operation from  $-40^\circ\text{C}$  to  $85^\circ\text{C}$ .

SN54LVTZ240 . . . J PACKAGE  
SN74LVTZ240 . . . DB, DW, OR PW PACKAGE  
(TOP VIEW)



SN54LVTZ240 . . . FK PACKAGE  
(TOP VIEW)



FUNCTION TABLE  
(each buffer)

| INPUTS          |   | OUTPUT |
|-----------------|---|--------|
| $\overline{OE}$ | A | Y      |
| L               | H | L      |
| L               | L | H      |
| H               | X | Z      |



Please be aware that an important notice concerning availability, standard warranty, and use in critical applications of Texas Instruments semiconductor products and disclaimers thereto appears at the end of this data sheet.

UNLESS OTHERWISE NOTED this document contains PRODUCTION DATA information current as of publication date. Products conform to specifications per the terms of Texas Instruments standard warranty. Production processing does not necessarily include testing of all parameters.

**TEXAS  
INSTRUMENTS**

POST OFFICE BOX 655303 • DALLAS, TEXAS 75265

Copyright © 1995, Texas Instruments Incorporated

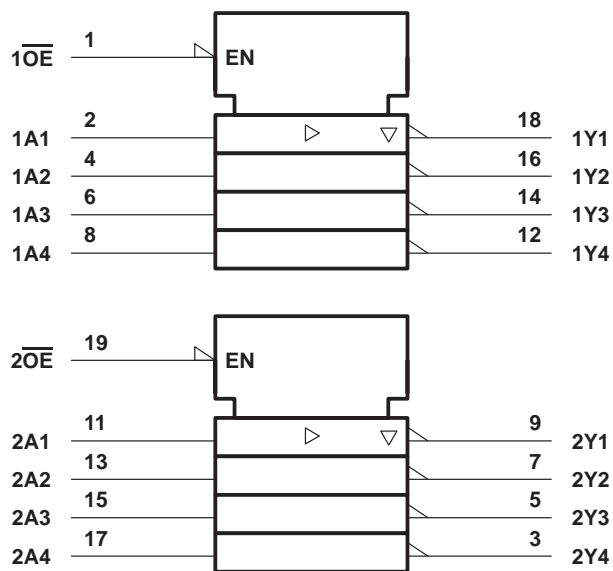
# SN54LVTZ240, SN74LVTZ240

## 3.3-V ABT OCTAL BUFFERS/DRIVERS

### WITH 3-STATE OUTPUTS

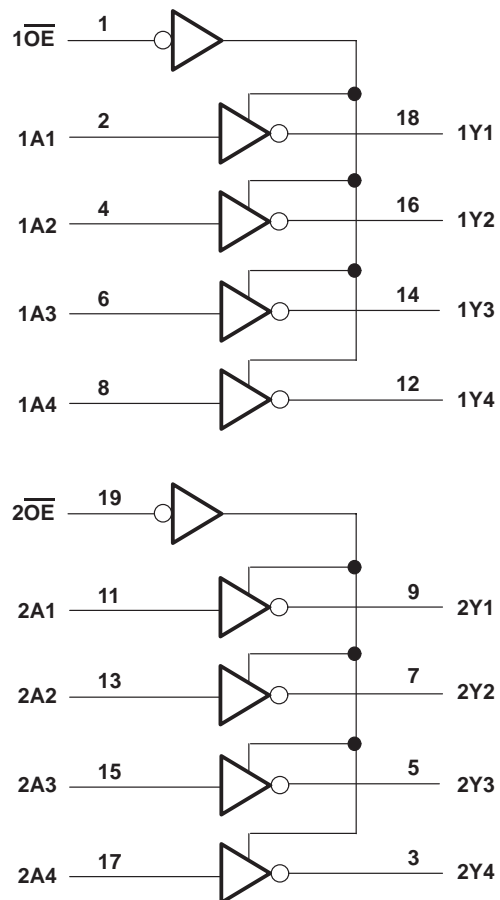
SCBS301B – SEPTEMBER 1993 – REVISED JULY 1995

#### logic symbol†



† This symbol is in accordance with ANSI/IEEE Std 91-1984 and IEC Publication 617-12.

#### logic diagram (positive logic)



# SN54LVTZ240, SN74LVTZ240

## 3.3-V ABT OCTAL BUFFERS/DRIVERS

### WITH 3-STATE OUTPUTS

SCBS301B – SEPTEMBER 1993 – REVISED JULY 1995

#### absolute maximum ratings over operating free-air temperature range (unless otherwise noted)<sup>†</sup>

|   |                 |
|---|-----------------|
| Supply voltage range, $V_{CC}$  | –0.5 V to 4.6 V |
| Input voltage range, $V_I$ (see Note 1)   | –0.5 V to 7 V   |
| Voltage range applied to any output in the high state or power-off state, $V_O$ (see Note 1)  | –0.5 V to 7 V   |
| Current into any output in the low state, $I_O$ : SN54LVTZ240                                 | 96 mA           |
| SN74LVTZ240   | 128 mA          |
| Current into any output in the high state, $I_O$ (see Note 2): SN54LVTZ240                    | 48 mA           |
| SN74LVTZ240   | 64 mA           |
| Input clamp current, $I_{IK}$ ( $V_I < 0$ )   | –50 mA          |
| Output clamp current, $I_{OK}$ ( $V_O < 0$ )  | –50 mA          |
| Maximum power dissipation at $T_A = 55^\circ\text{C}$ (in still air) (see Note 3): DB package | 0.6 W           |
| DW package  | 1.6 W           |
| PW package  | 0.7 W           |
| Storage temperature range, $T_{stg}$  | –65°C to 150°C  |

<sup>†</sup> Stresses beyond those listed under “absolute maximum ratings” may cause permanent damage to the device. These are stress ratings only, and functional operation of the device at these or any other conditions beyond those indicated under “recommended operating conditions” is not implied. Exposure to absolute-maximum-rated conditions for extended periods may affect device reliability.

- NOTES:
1. The input and output negative-voltage ratings may be exceeded if the input and output clamp-current ratings are observed.
  2. This current flows only when the output is in the high state and  $V_O > V_{CC}$ .
  3. The maximum package power dissipation is calculated using a junction temperature of 150°C and a board trace length of 750 mils. For more information, refer to the *Package Thermal Considerations* application note in the 1994 *ABT Advanced BiCMOS Technology Data Book*, literature number SCBD002B.

#### recommended operating conditions (see Note 4)

|                          |                                    | SN54LVTZ240     |     | SN74LVTZ240 |     | UNIT |
|--------------------------|------------------------------------|-----------------|-----|-------------|-----|------|
|                          |                                    | MIN             | MAX | MIN         | MAX |      |
| $V_{CC}$                 | Supply voltage                     | 2.7             | 3.6 | 2.7         | 3.6 | V    |
| $V_{IH}$                 | High-level input voltage           | 2               |     | 2           |     | V    |
| $V_{IL}$                 | Low-level input voltage            |                 | 0.8 |             | 0.8 | V    |
| $V_I$                    | Input voltage                      |                 | 5.5 |             | 5.5 | V    |
| $I_{OH}$                 | High-level output current          |                 | –24 |             | –32 | mA   |
| $I_{OL}$                 | Low-level output current           |                 | 48  |             | 64  | mA   |
| $\Delta t/\Delta v$      | Input transition rise or fall rate | Outputs enabled |     |             | 10  | ns/V |
| $\Delta t/\Delta V_{CC}$ | Power-up ramp rate                 | 200             |     | 200         |     | μs/V |
| $T_A$                    | Operating free-air temperature     | –55             | 125 | –40         | 85  | °C   |

NOTE 4: Unused control inputs must be held high or low to prevent them from floating.

# SN54LVTZ240, SN74LVTZ240

## 3.3-V ABT OCTAL BUFFERS/DRIVERS

### WITH 3-STATE OUTPUTS

SCBS301B – SEPTEMBER 1993 – REVISED JULY 1995

electrical characteristics over recommended operating free-air temperature range (unless otherwise noted)

| PARAMETER             | TEST CONDITIONS  |   |                  | SN54LVTZ240          |      | SN74LVTZ240          |       | UNIT |
|-----------------------|--|---|------------------|----------------------|------|----------------------|-------|------|
|                       |  |   |                  | MIN                  | TYP† | MAX                  | MIN   |      |
| V <sub>IK</sub>       | V <sub>CC</sub> = 2.7 V, I <sub>I</sub> = −18 mA   |   |                  | −1.2                 |      | −1.2                 |       | V    |
| V <sub>OH</sub>       | V <sub>CC</sub> = MIN to MAX‡, I <sub>OH</sub> = −100 μA   |   |                  | V <sub>CC</sub> −0.2 |      | V <sub>CC</sub> −0.2 |       | V    |
|                       | V <sub>CC</sub> = 2.7 V, I <sub>OH</sub> = − 8 mA  |   |                  | 2.4                  |      | 2.4                  |       |      |
|                       | V <sub>CC</sub> = 3 V  | I <sub>OH</sub> = − 24 mA               |                  | 2                    |      |                      |       |      |
|                       |  | I <sub>OH</sub> = −32 mA                |                  |                      |      | 2                    |       |      |
| V <sub>OL</sub>       | V <sub>CC</sub> = 2.7 V  | I <sub>OL</sub> = 100 μA                |                  | 0.2                  |      | 0.2                  |       | V    |
|                       |  | I <sub>OL</sub> = 24 mA                 |                  | 0.5                  |      | 0.5                  |       |      |
|                       | V <sub>CC</sub> = 3 V  | I <sub>OL</sub> = 16 mA                 |                  | 0.4                  |      | 0.4                  |       |      |
|                       |  | I <sub>OL</sub> = 32 mA                 |                  | 0.5                  |      | 0.5                  |       |      |
|                       |  | I <sub>OL</sub> = 48 mA                 |                  | 0.55                 |      |                      |       |      |
|                       |  | I <sub>OL</sub> = 64 mA                 |                  |                      |      | 0.55                 |       |      |
|                       |  |   |                  |                      |      |                      |       |      |
| I <sub>I</sub>        | V <sub>CC</sub> = 0 or MAX‡, V <sub>I</sub> = 5.5 V  |   | 10               |                      | 10   |                      | μA    |      |
|                       | V <sub>CC</sub> = 0 to 3.6 V   | V <sub>I</sub> = V <sub>CC</sub> or GND | Control inputs   | ±1                   |      | ±1                   |       |      |
|                       |  | V <sub>I</sub> = V <sub>CC</sub>        | Data inputs      | 1                    |      | 1                    |       |      |
|                       |  | V <sub>I</sub> = 0                      |                  | −5                   |      | −5                   |       |      |
| I <sub>off</sub>      | V <sub>CC</sub> = 0 V, V <sub>I</sub> or V <sub>O</sub> = 0 to 4.5 V   |   |                  |                      |      | ±100                 |       | μA   |
| I <sub>OZPU</sub> §   | V <sub>CC</sub> = 0 to 1.5 V, V <sub>O</sub> = 0.5 V to 3 V, $\overline{OE}$ = X                             |   |                  |                      |      | ±50                  |       | μA   |
| I <sub>OZPD</sub> §   | V <sub>CC</sub> = 1.5 V to 0, V <sub>O</sub> = 0.5 V to 3 V, $\overline{OE}$ = X                             |   |                  |                      |      | ±50                  |       | μA   |
| I <sub>I</sub> (hold) | V <sub>CC</sub> = 3 V  | V <sub>I</sub> = 0.8 V                  | A inputs         | 75                   | 75   |                      | μA    |      |
|                       |  | V <sub>I</sub> = 2 V                    |                  | −75                  | −75  |                      |       |      |
| I <sub>OZH</sub>      | V <sub>CC</sub> = 3.6 V, V <sub>O</sub> = 3 V  |   |                  | 5                    |      | 5                    |       | μA   |
| I <sub>OZL</sub>      | V <sub>CC</sub> = 3.6 V, V <sub>O</sub> = 0.5 V  |   |                  | −5                   |      | −5                   |       | μA   |
| I <sub>CC</sub>       | V <sub>CC</sub> = 3.6 V, I <sub>O</sub> = 0, V <sub>I</sub> = V <sub>CC</sub> or GND                         |   | Outputs high     | 0.12                 | 0.5  | 0.12                 | 0.225 | mA   |
|                       |  |   | Outputs low      | 8.6                  | 14   | 8.6                  | 12    |      |
|                       |  |   | Outputs disabled | 0.12                 | 0.5  | 0.12                 | 0.225 |      |
| ΔI <sub>CC</sub> ¶    | V <sub>CC</sub> = 3 V to 3.6 V, One input at V <sub>CC</sub> − 0.6 V, Other inputs at V <sub>CC</sub> or GND |   |                  | 0.3                  |      | 0.2                  |       | mA   |
| C <sub>i</sub>        | V <sub>I</sub> = 3 V or 0  |   |                  | 4                    |      | 4                    |       | pF   |
| C <sub>o</sub>        | V <sub>O</sub> = 3 V or 0  |   |                  | 8                    |      | 8                    |       | pF   |

† All typical values are at  $V_{CC} = 3.3\text{ V}$ ,  $T_A = 25^\circ\text{C}$ .

‡ For conditions shown as MIN or MAX, use the appropriate value specified under recommended operating conditions.

§ This parameter is specified by characterization.

¶ This is the increase in supply current for each input that is at the specified TTL voltage level rather than  $V_{CC}$  or GND.

**SN54LVTZ240, SN74LVTZ240**  
**3.3-V ABT OCTAL BUFFERS/DRIVERS**  
**WITH 3-STATE OUTPUTS**

SCBS301B – SEPTEMBER 1993 – REVISED JULY 1995

switching characteristics over recommended ranges of supply voltage and operating free-air temperature,  $C_L = 50$  pF (unless otherwise noted) (see Figure 1)

| PARAMETER        | FROM<br>(INPUT) | TO<br>(OUTPUT) | SN54LVTZ240                        |     |                         |     | SN74LVTZ240                        |      |     |                         | UNIT |     |
|------------------|-----------------|----------------|------------------------------------|-----|-------------------------|-----|------------------------------------|------|-----|-------------------------|------|-----|
|                  |                 |                | V <sub>CC</sub> = 3.3 V<br>± 0.3 V |     | V <sub>CC</sub> = 2.7 V |     | V <sub>CC</sub> = 3.3 V<br>± 0.3 V |      |     | V <sub>CC</sub> = 2.7 V |      |     |
|                  |                 |                | MIN                                | MAX | MIN                     | MAX | MIN                                | TYP† | MAX | MIN                     |      | MAX |
| t <sub>PLH</sub> | A               | Y              | 1                                  | 4.5 |                         | 5.4 | 1                                  | 2.5  | 4.3 |                         | 5.2  | ns  |
| t <sub>PHL</sub> |                 |                | 1                                  | 4.5 |                         | 5.2 | 1                                  | 2.5  | 4.3 |                         | 5    |     |
| t <sub>PZH</sub> | OE              | Y              | 1                                  | 5.4 |                         | 6.5 | 1                                  | 2.7  | 5.2 |                         | 6.3  | ns  |
| t <sub>PZL</sub> |                 |                | 1                                  | 5.4 |                         | 7.4 | 1                                  | 3.1  | 5.2 |                         | 6.7  |     |
| t <sub>PHZ</sub> | OE              | Y              | 2                                  | 5.8 |                         | 6.5 | 2                                  | 3.9  | 5.6 |                         | 6.3  | ns  |
| t <sub>PLZ</sub> |                 |                | 1.6                                | 5.3 |                         | 5.8 | 1.6                                | 3.2  | 5.1 |                         | 5.6  |     |

† All typical values are at  $V_{CC} = 3.3\text{ V}$ ,  $T_A = 25^\circ\text{C}$ .

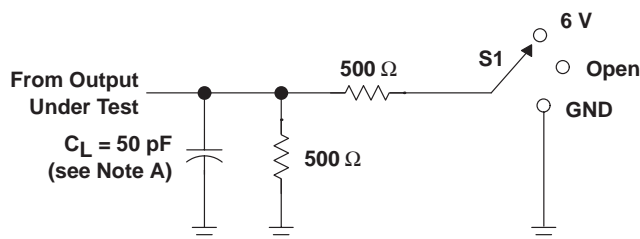
# SN54LVTZ240, SN74LVTZ240

## 3.3-V ABT OCTAL BUFFERS/DRIVERS

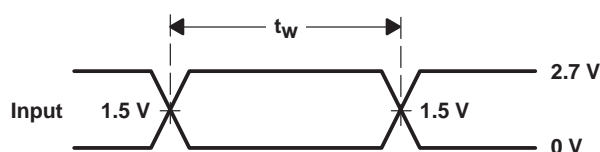
### WITH 3-STATE OUTPUTS

SCBS301B – SEPTEMBER 1993 – REVISED JULY 1995

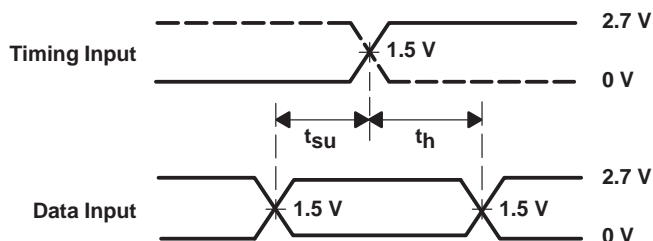
#### PARAMETER MEASUREMENT INFORMATION



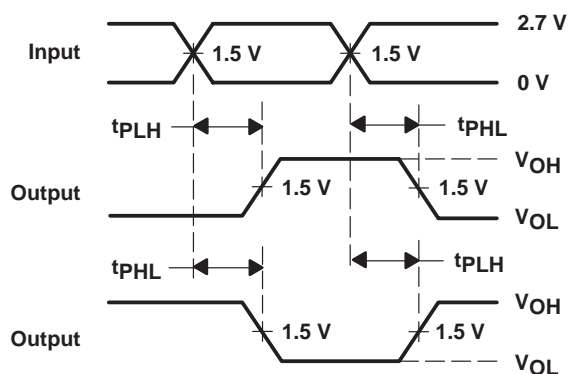
LOAD CIRCUIT FOR OUTPUTS



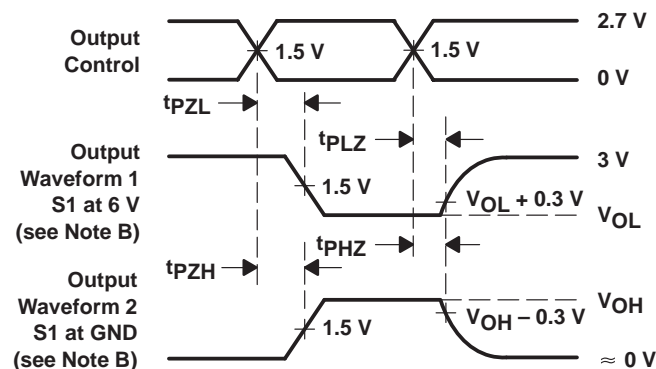
VOLTAGE WAVEFORMS  
PULSE DURATION



VOLTAGE WAVEFORMS  
SETUP AND HOLD TIMES



VOLTAGE WAVEFORMS  
PROPAGATION DELAY TIMES  
INVERTING AND NONINVERTING OUTPUTS



VOLTAGE WAVEFORMS  
ENABLE AND DISABLE TIMES  
LOW- AND HIGH-LEVEL ENABLING

- NOTES:
- A.  $C_L$  includes probe and jig capacitance.
  - B. Waveform 1 is for an output with internal conditions such that the output is low except when disabled by the output control. Waveform 2 is for an output with internal conditions such that the output is high except when disabled by the output control.
  - C. All input pulses are supplied by generators having the following characteristics:  $PRR \leq 10 \text{ MHz}$ ,  $Z_O = 50 \Omega$ ,  $t_r \leq 2.5 \text{ ns}$ ,  $t_f \leq 2.5 \text{ ns}$ .
  - D. The outputs are measured one at a time with one transition per measurement.

Figure 1. Load Circuit and Voltage Waveforms

## **IMPORTANT NOTICE**

Texas Instruments and its subsidiaries (TI) reserve the right to make changes to their products or to discontinue any product or service without notice, and advise customers to obtain the latest version of relevant information to verify, before placing orders, that information being relied on is current and complete. All products are sold subject to the terms and conditions of sale supplied at the time of order acknowledgement, including those pertaining to warranty, patent infringement, and limitation of liability.

TI warrants performance of its semiconductor products to the specifications applicable at the time of sale in accordance with TI's standard warranty. Testing and other quality control techniques are utilized to the extent TI deems necessary to support this warranty. Specific testing of all parameters of each device is not necessarily performed, except those mandated by government requirements.

CERTAIN APPLICATIONS USING SEMICONDUCTOR PRODUCTS MAY INVOLVE POTENTIAL RISKS OF DEATH, PERSONAL INJURY, OR SEVERE PROPERTY OR ENVIRONMENTAL DAMAGE ("CRITICAL APPLICATIONS"). TI SEMICONDUCTOR PRODUCTS ARE NOT DESIGNED, AUTHORIZED, OR WARRANTED TO BE SUITABLE FOR USE IN LIFE-SUPPORT DEVICES OR SYSTEMS OR OTHER CRITICAL APPLICATIONS. INCLUSION OF TI PRODUCTS IN SUCH APPLICATIONS IS UNDERSTOOD TO BE FULLY AT THE CUSTOMER'S RISK.

In order to minimize risks associated with the customer's applications, adequate design and operating safeguards must be provided by the customer to minimize inherent or procedural hazards.

TI assumes no liability for applications assistance or customer product design. TI does not warrant or represent that any license, either express or implied, is granted under any patent right, copyright, mask work right, or other intellectual property right of TI covering or relating to any combination, machine, or process in which such semiconductor products or services might be or are used. TI's publication of information regarding any third party's products or services does not constitute TI's approval, warranty or endorsement thereof.