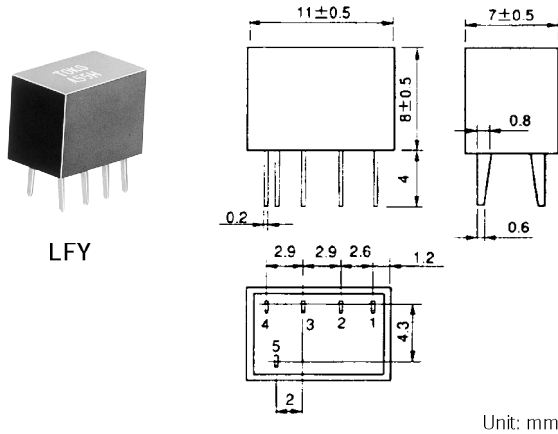
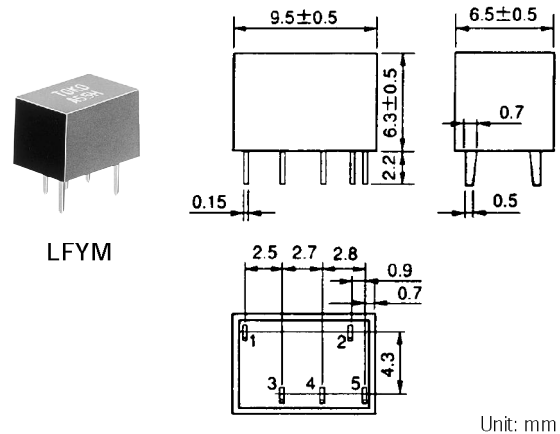


TYPE LFY,LFYM



LFY



LFYM

Description

- AM Ceramic filters are connected in a ladder structure and are available as either 4/6 element devices
- Bandwidths from 6 to 30 kHz

Features

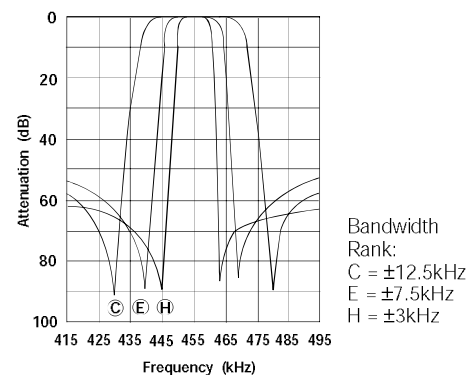
- 450, 455 kHz, (460kHz and 486kHz by Special request)
- High Selectivity
- Compact Package
- Version with group delay variations specified also available

Applications

- AM radio cassettes, AM stereo sets
- Cordless telephones, Pagers, Cellular phones
- Two-way radios

Frequency Response

LFY / LFYM (6 element)



STANDARD FILTERS SELECTION GUIDE

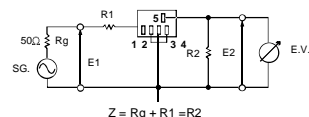
TYPE LFY/LFYM

TOKO Part Number	Center * Frequency (kHz)	Bandwidth at 6 dB (kHz)	Bandwidth at 50 dB (kHz)	Attenuation fo ± 100 KHz (dB)	Insertion Loss (dB)	Input/Output Impedance (k Ω)
LFY						
ALFY455H	455 \pm 1.0	± 3.0 min.	± 9.0 min.	35.0 max.	6.0 max.	2.0
ALFY455G	455 \pm 1.0	± 4.5 min.	± 10.0 min.	35.0 max.	6.0 max.	2.0
ALFY455F	455 \pm 1.0	± 6.0 min.	± 12.5 min.	35.0 max.	6.0 max.	2.0
ALFY455E	455 \pm 1.0	± 7.5 min.	± 15.0 min.	35.0 max.	6.0 max.	1.5
BLFY455D	455 \pm 2.0	± 10.0 min.	± 20.0 min.	35.0 max.	4.0 max.	1.5
BLFY455C	455 \pm 2.0	± 12.5 min.	± 24.0 min.	35.0 max.	4.0 max.	1.5
BLFY455B	455 \pm 2.0	± 15.0 min.	± 30.0 min.	35.0 max.	4.0 max.	1.5
LFYM						
ALFYM455H	455 \pm 1.0	± 3.0 min.	± 9.0 min.	35.0 max.	6.0 max.	2.0
ALFYM455G	455 \pm 1.0	± 4.5 min.	± 10.0 min.	35.0 max.	6.0 max.	2.0
ALFYM455F	455 \pm 1.0	± 6.0 min.	± 12.5 min.	35.0 max.	6.0 max.	2.0
ALFYM455E	455 \pm 1.0	± 7.5 min.	± 15.0 min.	35.0 max.	6.0 max.	1.5
BLFYM455D	455 \pm 2.0	± 10.0 min.	± 20.0 min.	35.0 max.	4.0 max.	1.5
BLFYM455C	455 \pm 2.0	± 12.5 min.	± 24.0 min.	35.0 max.	4.0 max.	1.5
BLFYM455B	455 \pm 2.0	± 15.0 min.	± 30.0 min.	35.0 max.	4.0 max.	1.5

* For 450kHz, substitute 450 for 455 in part number.

LFY

Test circuit

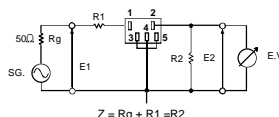


1.800.PIK.TOKO

www.tokoam.com

LFYM

Test circuit



1.847.297.0070

Test conditions

1. C includes test circuit capacitance.
2. R1, R2: Input-output impedance
 Cs: Stray capacitance
 (less than 50pF, including EV)
 R-LOG0502A