

RECTIFIER STACK (HIGH-SPEED CENTER TAP)

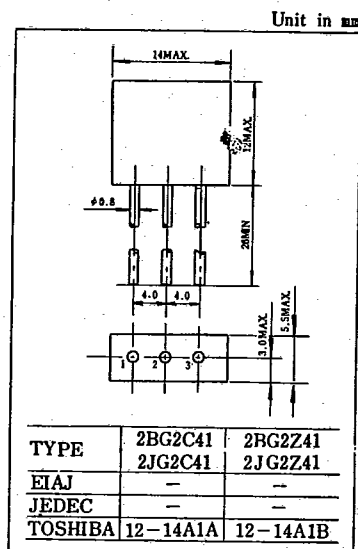
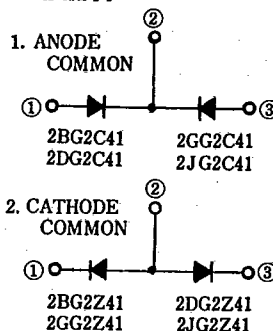
39 DE 9097250 0002339 2

2JG2C41 600V 2A

MAXIMUM RATINGS

CHARACTERISTIC	SYMBOL	RATING	UNIT
Repetitive Peak reverse voltage	2BG2C41, 2BG2Z41	100	V
	2DG2C41, 2DG2Z41	200	
	2GG2C41, 2GG2Z41	400	
	2JG2C41, 2JG2Z41	600	
Average Output Rectified Current (Fig. 1)	I_O	2.0	A
Peak One Cycle Surge Forward Current (Non-Repetitive)	I_{FSM}	50(50Hz)	A
Junction Temperature	T_j	-40~125	°C
Storage Temperature Range	T_{stg}	-40~125	°C

POLARITY

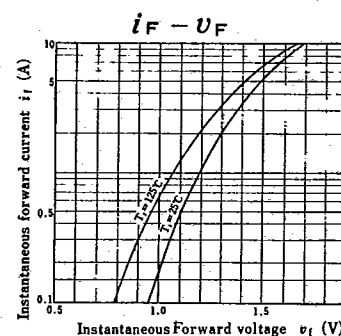
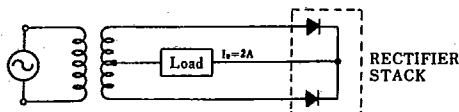


ELECTRICAL CHARACTERISTICS

CHARACTERISTIC	SYMBOL	CONDITION	MIN.	TYP.	MAX.	UNIT
Peak Forward Voltage	V_{FM}	$I_{FM}=2A, T_a=25^\circ C$	—	—	1.3	V
Repetitive Peak Reverse Current	I_{RRM}	$V_{RRM}=\text{Rated}, T_a=125^\circ C$	—	—	0.5	mA
Reverse Recovery Time	t_{rr}	$I_F=20mA, I_R=1mA, T_a=25^\circ C$	—	—	1.5	μA
Thermal Resistance	$R_{th(j-a)}$	DC	—	—	45	°C/W

Notes : 1. Soldering : 6 mm is the minimum to be kept between case and soldering part.
2. Lead Bending : 6 mm is the minimum to be kept from the case when bend the lead wire.

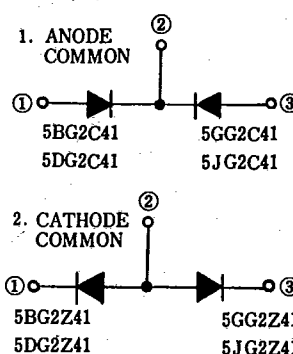
Fig.1 NORMAL CIRCUIT.

**5JG2C41** 600V 5A

MAXIMUM RATINGS

CHARACTERISTIC	SYMBOL	RATING	UNIT
Repetitive Peak Reverse Voltage	5BG2C41, 5BG2Z41	100	V
	5DG2C41, 5DG2Z41	200	
	5GG2C41, 5GG2Z41	400	
	5JG2C41, 5JG2Z41	600	
Average Output Rectified Current (Fig. 1)	I_O	5	A
Peak One Cycle Surge Forward Current (Non-Repetitive)	I_{FSM}	30(50Hz)	A
Storage Temperature Range	T_{stg}	-20~150	°C
Junction Temperature	T_j	-20~150	°C

POLARITY



ELECTRICAL CHARACTERISTICS

CHARACTERISTIC	SYMBOL	CONDITION	MIN.	TYP.	MAX.	UNIT
Peak Forward Voltage	V_{FM}	$I_{FM}=5A, T_a=25^\circ C$	—	—	1.6	V
Repetitive Peak Reverse Current	I_{RRM}	$V_{RRM}=\text{Rated}, T_a=150^\circ C$	—	—	6.0	mA
Reverse Recovery Time	$t_{rr}(1)$	$I_F=20mA, I_R=1mA, T_a=25^\circ C$	—	—	1.5	μs
	$t_{rr}(2)$	$I_F=1.0A, V_R=30V, T_a=25^\circ C$	—	—	200	ns
Thermal Resistance	$R_{th(j-c)}$	DC	—	—	5	°C/W

Fig.1 NORMAL CIRCUIT.

