

# TC4027BP, TC4027BF, TC4027BFN

## TC4027B DUAL J-K MASTER-SLAVE FLIP FLOP

TC4027B is J-K master-slave flip-flop having RESET and SET functions.

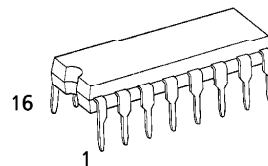
In the case of J-K made, when the clock input is given with both RESET and SET at "L", the output changes at rising edge of the clock according to the states of J and K.

When SET input is placed at "H", and RESET input is placed at "L", outputs become  $Q = "H"$ , and  $\bar{Q} = "L"$ .

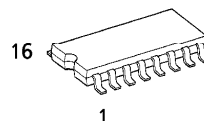
When RESET input is placed at "H", and SET input is placed at "L", outputs become  $Q = "L"$ , and  $\bar{Q} = "H"$ .

When both of RESET input and SET input are at "H", outputs become  $Q = "H"$  and  $\bar{Q} = "H"$ .

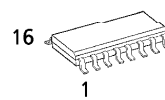
(Note) The JEDEC SOP (FN) is not available in Japan.



P (DIP16-P-300-2.54A)  
Weight : 1.00g (Typ.)



F (SOP16-P-300-1.27)  
Weight : 0.18g (Typ.)

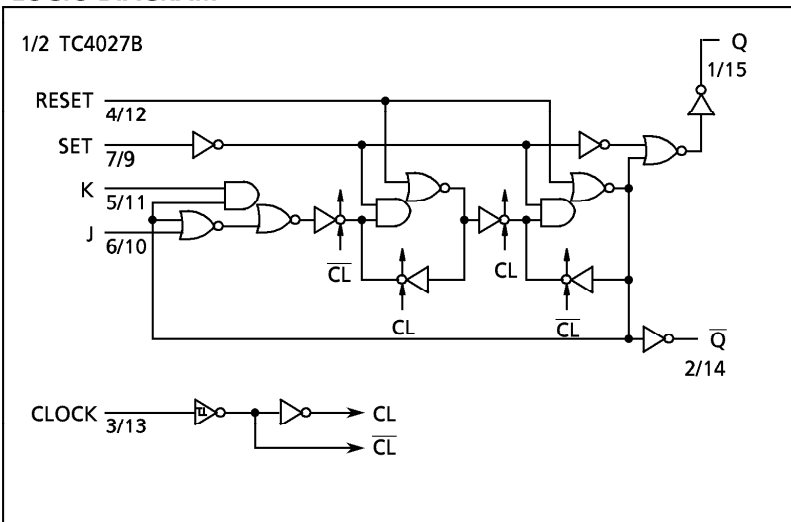


FN (SOIC16-P-150-1.27)  
Weight : 0.13g (Typ.)

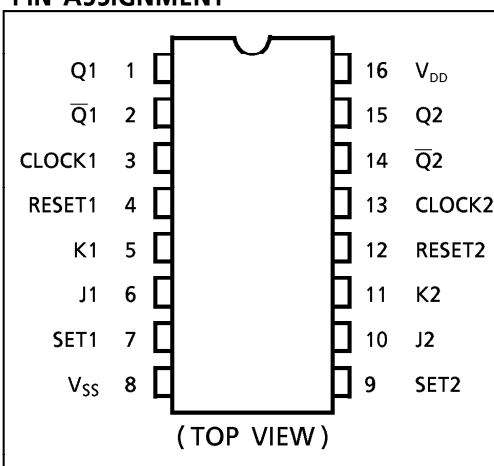
## MAXIMUM RATINGS

CHARACTERISTIC	SYMBOL	RATING	UNIT
DC Supply Voltage	$V_{DD}$	$V_{SS} - 0.5 \sim V_{SS} + 20$	V
Input Voltage	$V_{IN}$	$V_{SS} - 0.5 \sim V_{DD} + 0.5$	V
Output Voltage	$V_{OUT}$	$V_{SS} - 0.5 \sim V_{DD} + 0.5$	V
DC Input Current	$I_{IN}$	$\pm 10$	mA
Power Dissipation	$P_D$	300 (DIP) / 180 (SOIC)	mW
Operating Temperature Range	$T_{opr}$	$-40 \sim 85$	$^{\circ}\text{C}$
Storage Temperature Range	$T_{stg}$	$-65 \sim 150$	$^{\circ}\text{C}$

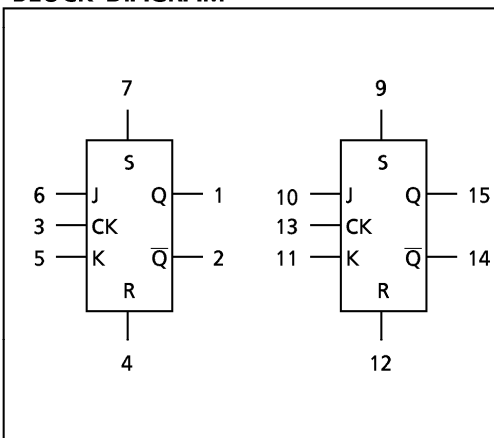
## LOGIC DIAGRAM



## PIN ASSIGNMENT






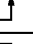
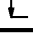
## BLOCK DIAGRAM



961001EBA2

● TOSHIBA is continually working to improve the quality and the reliability of its products. Nevertheless, semiconductor devices in general can malfunction or fail due to their inherent electrical sensitivity and vulnerability to physical stress. It is the responsibility of the buyer, when utilizing TOSHIBA products, to observe standards of safety, and to avoid situations in which a malfunction or failure of a TOSHIBA product could cause loss of human life, bodily injury or damage to property. In developing your designs, please ensure that TOSHIBA products are used within specified operating ranges as set forth in the most recent products specifications. Also, please keep in mind the precautions and conditions set forth in the TOSHIBA Semiconductor Reliability Handbook.

TRUTH TABLE

INPUTS					OUTPUTS	
RESET	SET	J	K	CLOCK $\Delta$	$Q_{n+1}$	$\overline{Q}_{n+1}$
L	H	*	*	*	H	L
H	L	*	*	*	L	H
H	H	*	*	*	H	H
L	L	L	L		$Q_n^*$	$Q_n^*$
L	L	L	H		L	H
L	L	H	L		H	L
L	L	H	H		$\overline{Q}_n^{**}$	$Q_n^{**}$
L	L	*	*		$Q_n^*$	$\overline{Q}_n^*$

\* : Don't Care  
 $\Delta$  : Level Change  
\* : No Change  
\*\* : Change

961001EBA2'

- The products described in this document are subject to foreign exchange and foreign trade control laws.
- The information contained herein is presented only as a guide for the applications of our products. No responsibility is assumed by TOSHIBA CORPORATION for any infringements of intellectual property or other rights of the third parties which may result from its use. No license is granted by implication or otherwise under any intellectual property or other rights of TOSHIBA CORPORATION or others.
- The information contained herein is subject to change without notice.

RECOMMENDED OPERATING CONDITIONS ( $V_{SS} = 0V$ )

CHARACTERISTIC	SYMBOL	TEST CONDITION	MIN.	TYP.	MAX.	UNIT
DC Supply Voltage	$V_{DD}$		3	—	18	V
Input Voltage	$V_{IN}$		0	—	$V_{DD}$	V

STATIC ELECTRICAL CHARACTERISTICS ( $V_{SS} = 0V$ )

CHARACTERISTIC	SYM-BOL	TEST CONDITION	$V_{DD}$ (V)	- 40°C		25°C			85°C		UNIT
				MIN.	MAX.	MIN.	TYP.	MAX.	MIN.	MAX.	
High-Level Output Voltage	$V_{OH}$	$ I_{OUT}  < 1\mu A$ $V_{IN} = V_{SS}, V_{DD}$	5	4.95	—	4.95	5.00	—	4.95	—	V
			10	9.95	—	9.95	10.00	—	9.95	—	
			15	14.95	—	14.95	15.00	—	14.95	—	
Low-Level Output Voltage	$V_{OL}$	$ I_{OUT}  < 1\mu A$ $V_{IN} = V_{SS}, V_{DD}$	5	—	0.05	—	0.00	0.05	—	0.05	V
			10	—	0.05	—	0.00	0.05	—	0.05	
			15	—	0.05	—	0.00	0.05	—	0.05	
Output High Current	$I_{OH}$	$V_{OH} = 4.6V$	5	-0.61	—	-0.51	-1.0	—	-0.42	—	mA
		$V_{OH} = 2.5V$	5	-2.50	—	-2.10	-4.0	—	-1.70	—	
		$V_{OH} = 9.5V$	10	-1.50	—	-1.30	-2.2	—	-1.10	—	
		$V_{OH} = 13.5V$	15	-4.00	—	-3.40	-9.0	—	-2.80	—	
		$V_{IN} = V_{SS}, V_{DD}$									
Output Low Current	$I_{OL}$	$V_{OL} = 0.4V$	5	0.61	—	0.51	1.2	—	0.42	—	mA
		$V_{OL} = 0.5V$	10	1.50	—	1.30	3.2	—	1.10	—	
		$V_{OL} = 1.5V$	15	4.00	—	3.40	12.0	—	2.80	—	
		$V_{IN} = V_{SS}, V_{DD}$									
Input High Voltage	$V_{IH}$	$V_{OUT} = 0.5V, 4.5V$	5	3.5	—	3.5	2.75	—	3.5	—	V
		$V_{OUT} = 1.0V, 9.0V$	10	7.0	—	7.0	5.50	—	7.0	—	
		$V_{OUT} = 1.5V, 13.5V$	15	11.0	—	11.0	8.25	—	11.0	—	
		$ I_{OUT}  < 1\mu A$									
Input Low Voltage	$V_{IL}$	$V_{OUT} = 0.5V, 4.5V$	5	—	1.5	—	2.25	1.5	—	1.5	V
		$V_{OUT} = 1.0V, 9.0V$	10	—	3.0	—	4.50	3.0	—	3.0	
		$V_{OUT} = 1.5V, 13.5V$	15	—	4.0	—	6.75	4.0	—	4.0	
		$ I_{OUT}  < 1\mu A$									
Input Current	"H" Level	$I_{IH}$	$V_{IH} = 18V$	18	—	0.1	—	$10^{-5}$	0.1	—	μA
	"L" Level	$I_{IL}$	$V_{IL} = 0V$	18	—	-0.1	—	$-10^{-5}$	-0.1	—	
Quiescent Supply Current	$I_{DD}$	$V_{IN} = V_{SS}, V_{DD}^*$	5	—	1	—	0.002	1	—	30	μA
			10	—	2	—	0.004	2	—	60	
			15	—	4	—	0.008	4	—	120	

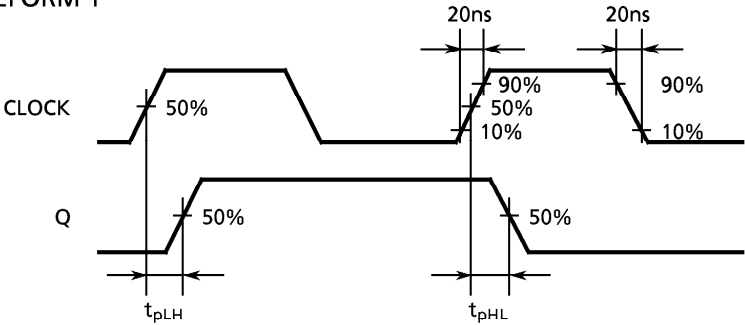
\* All valid input combinations.

## DYNAMIC ELECTRICAL CHARACTERISTICS (Ta = 25°C, Vss = 0V, CL = 50pF)

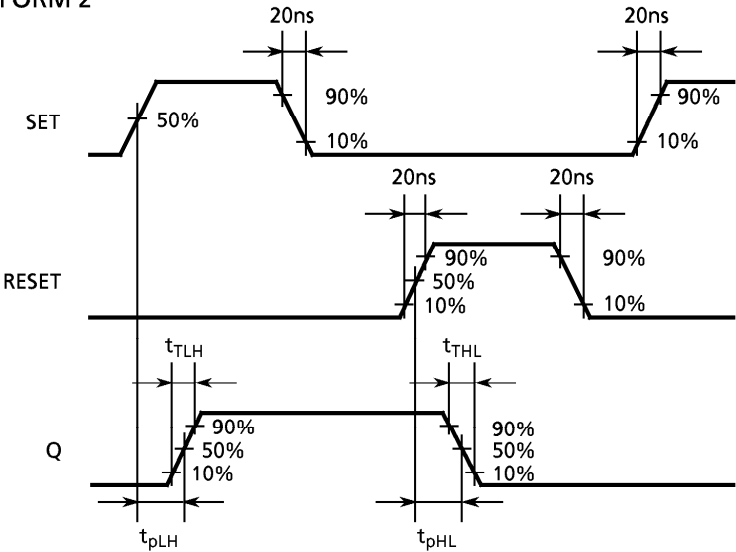
CHARACTERISTIC	SYMBOL	TEST CONDITION	V <sub>DD</sub> (V)	MIN.	TYP.	MAX.	UNIT
Output Transition Time (Low to High)	t <sub>TLH</sub>		5 10 15	— — —	70 35 30	200 100 80	ns
Output Transition Time (High to Low)	t <sub>THL</sub>		5 10 15	— — —	70 35 30	200 100 80	
Propagation Delay Time (CLOCK - Q, $\overline{Q}$ )	t <sub>pLH</sub> t <sub>pHL</sub>		5 10 15	— — —	150 75 60	300 130 90	
Propagation Delay Time (SET, RESET - Q, $\overline{Q}$ )	t <sub>pLH</sub> t <sub>pHL</sub>		5 10 15	— — —	120 60 45	300 130 90	
Max. Clock Frequency	f <sub>CL</sub>		5 10 15	3.5 8.0 12.0	8 16 20	— — —	MHz
Max. Clock Input Rise Time Max. Clock Input Fall Time	t <sub>rCL</sub> t <sub>fCL</sub>		5 10 15	No Limit			μs
Min. Pulse Width (SET, RESET)	t <sub>W</sub>		5 10 15	— — —	60 35 25	180 80 50	ns
Min. Clock Pulse Width	t <sub>W</sub>		5 10 15	— — —	60 35 25	140 60 40	
Min. Set-up Time (J, K - CLOCK)	t <sub>SU</sub>		5 10 15	— — —	30 10 5	140 50 35	ns
Min. Hold Time (J, K - CLOCK)	t <sub>H</sub>		5 10 15	— — —	— — —	140 50 35	
Min. Removal Time (SET, RESET - CLOCK)	t <sub>rem</sub>		5 10 15	— — —	— — —	40 20 15	
Input Capacitance	C <sub>IN</sub>			—	5	7.5	pF

WAVEFORMS FOR MEASUREMENT OF DYNAMIC CHARACTERISTICS

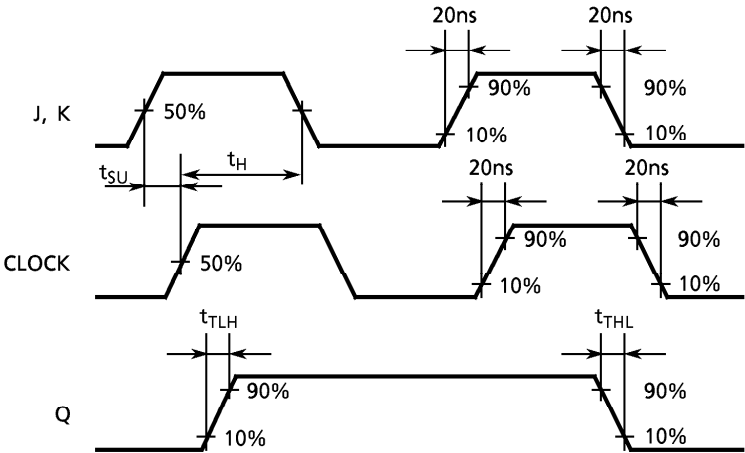
WAVEFORM 1



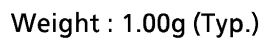
WAVEFORM 2



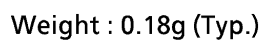
WAVEFORM 3



## Unit in mm



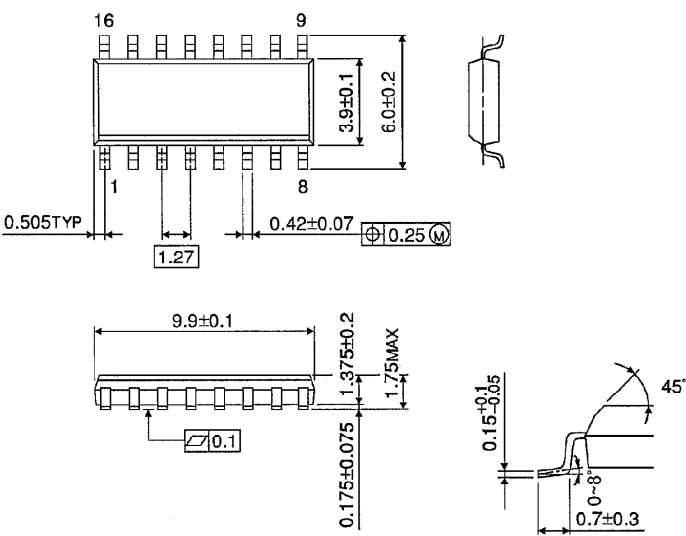
## Unit in mm



SOP 16PIN (150mil BODY) OUTLINE DRAWING (SOL16-P-150-1.27)

Unit in mm

(Note) This package is not available in Japan.



Weight : 0.13g (Typ.)