

# MKW2600 / MKW2600A Series

## 15 Watts 4:1 Wide Input Range DC/DC Converters

### Single and Dual Outputs

#### Key Features

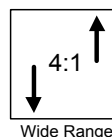
- High Efficiency up to 86%
- 4:1 Input Range
- I / O Isolation 1500VDC
- Short Circuit Protected
- Industry Standard Pinout
- Six-Side Shielded Case
- EMI Complies With EN55022 Class A  
(Only For MKW2600A Series)
- Remote on/off Control (Optional)
- MTBF > 700,000 Hours



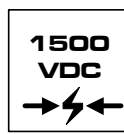
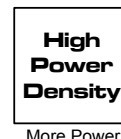
Minmax's MKW2600 series, comprising 10 different models, has been conceived as an applications specific range of DC/DC converters, specially addressing data communication equipments, mobile battery driven equipments, distributed power systems, telecommunication equipments, mixed analog/digital subsystems, process/machine control equipments, computer peripheral systems and industrial robot systems.

Packing up to 15W of power into a 2 x 1 x 0.4 inch package, with efficiency as high as 86%, the MKW2500 has wide input ranges of 9–36VDC, 18–75VDC and is available in output voltages of 3.3V, 5.1V, 12V,  $\pm 12V$  and  $\pm 15V$ .

Other features include continuous short circuit protection, remote on/off, six-side shielded case and EN55022 level A conducted noise compliance minimize design—in time, cost and eliminate the need for external components.



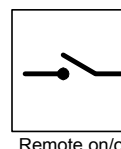
Wide Range



I/O Isolation



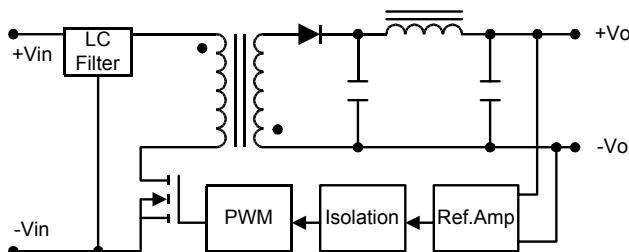
EN55022



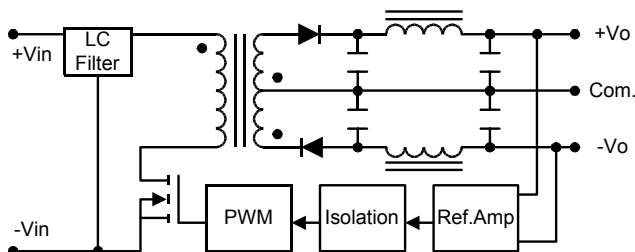
Remote on/off

#### Block Diagram

##### Single Output



##### Dual Output



# MKW2600 / MKW2600A Series

## Model Selection Guide

Model Number	Input Voltage	Output Voltage	Output Current		Input Current		Efficiency
			Max.	Min.	@Max. Load	@No Load	@Max. Load
	VDC	VDC	mA	mA	mA (Typ.)	mA (Typ.)	% (Typ.)
MKW2621	24 ( 9 ~ 36 )	3.3	3000	300	528	25	78
MKW2622		5.1	2950	295	764		82
MKW2623		12	1250	125	726		85
MKW2626		±12	±625	±62.5	726		85
MKW2627		±15	±500	±50	726		86
MKW2631	48 ( 18 ~ 75 )	3.3	3000	300	264	15	78
MKW2632		5.1	2950	295	382		82
MKW2633		12	1250	125	363		85
MKW2636		±12	±625	±62.5	363		85
MKW2637		±15	±500	±50	363		86

## Absolute Maximum Ratings

Parameter		Min.	Max.	Unit
Input Surge Voltage ( 1000 mS )	24VDC Input Models	−0.7	50	VDC
	48VDC Input Models	−0.7	100	VDC
Lead Temperature (1.5mm from case for 10 Sec.)		---	260	°C
Internal Power Dissipation		---	5,000	mW

Exceeding the absolute maximum ratings of the unit could cause damage.  
These are not continuous operating ratings.

## Note :

1. Specifications typical at Ta=+25°C, resistive load, nominal input voltage, rated output current unless otherwise noted.
2. Transient recovery time is measured to within 1% error band for a step change in output load of 75% to 100%.
3. Ripple & Noise measurement bandwidth is 0-20 MHz.
4. These power converters require a minimum output loading to maintain specified regulation.
5. Operation at no-load will not damage these units. However, they may not meet all specifications.
6. All DC/DC converters should be externally fused at the front end for protection.
7. Other input and output voltage may be available, please contact factory.
8. To order the converter with Remote on/off function, please add suffix - RC ( EX : MKW2621-RC ).
9. An optional internal filter is available. When the filter is added, the MKW2500 will meet EN55022-A. Add the suffix "A" to the model number, e.g. MKW2621A.
10. Specifications subject to change without notice.

## Environmental Specifications

Parameter	Conditions	Min.	Max.	Unit
Operating Temperature	Ambient	-40	+60	°C
Operating Temperature	Case	-40	+100	°C
Storage Temperature		-50	+125	°C
Humidity		---	95	%
Cooling	Free-Air Convection			
RFI	Six-Side Shielded Metal Case			

# MKW2600 / MKW2600A Series

## Input Specifications

Parameter	Model	Min.	Typ.	Max.	Unit
Start Voltage	24V Input Models	8	8.5	9	VDC
	48V Input Models	15	17	18	
Under Voltage Shutdown	24V Input Models	7	8	8.5	
	48V Input Models	13	15	17	
Reverse Polarity Input Current	All Models	---	---	1	A
Short Circuit Input Power		---	---	3500	mW
Input Filter		Pi Filter			

## Output Specifications

Parameter	Conditions	Min.	Typ.	Max.	Unit
Output Voltage Accuracy		---	$\pm 1.0$	$\pm 2.0$	%
Output Voltage Balance	Dual Output , Balanced Loads	---	$\pm 0.5$	$\pm 2.0$	%
Line Regulation	Vin=Min. to Max.	---	$\pm 0.1$	$\pm 0.5$	%
Load Regulation	Io=10% to 100%	---	$\pm 0.5$	$\pm 1.0$	%
Ripple & Noise (20MHz)		---	55	80	mV P-P
Ripple & Noise (20MHz)	Over Line, Load & Temp	---	---	100	mV P-P
Ripple & Noise (20MHz)		---	---	15	mV rms.
Over Power Protection		120	---	---	%
Transient Recovery Time	25% Load Step Change	---	300	500	$\mu$ S
Transient Response Deviation		---	$\pm 2$	$\pm 4$	%
Temperature Coefficient		---	$\pm 0.01$	$\pm 0.02$	%/°C
Output Short Circuit	Continuous				

## General Specifications

Parameter	Conditions	Min.	Typ.	Max.	Unit
Isolation Voltage	60 Seconds	1500	---	---	VDC
Isolation Voltage Test	Flash Tested for 1 Second	1650	---	---	VDC
Isolation Resistance	500VDC	1000	---	---	M $\Omega$
Isolation Capacitance	100KHz, 1V	---	1200	1500	pF
Switching Frequency		290	330	400	KHz
MTBF	MIL-HDBK-217F @ 25°C, Ground Benign	700	---	---	K Hours

## Remote On/Off Control

Parameter	Conditions	Min.	Typ.	Max.	Unit
Supply On	2.5 to 5.5VDC or Open Circuit				
Supply Off		-0.7	---	0.8	VDC
Standby Input Current		---	---	10	mA
Control Input Current ( on )		---	---	50	$\mu$ A
Control Input Current ( off )		---	---	-1	mA
Control Common	Referenced to Negative Input				

# MKW2600 / MKW2600A Series

## Capacitive Load

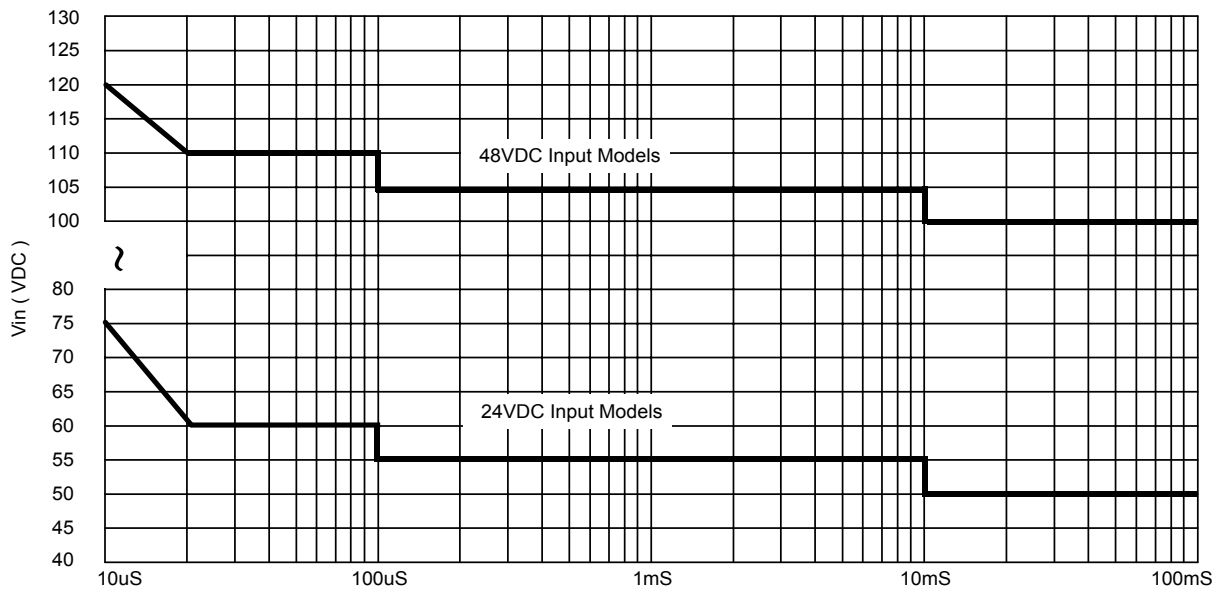
Models by Vout	3.3V	5.1V	12V	±12V #	±15V #	Unit
Maximum Capacitive Load	470	470	470	220	220	uF

Note: # For each output .

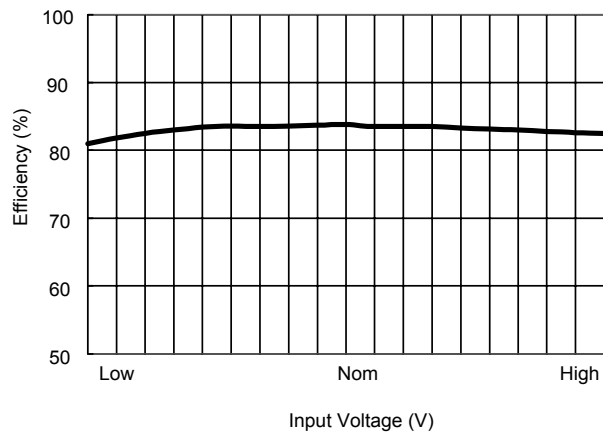
## Input Fuse Selection Guide

24V Input Models	48V Input Models
2500mA Slow – Blow Type	1250mA Slow – Blow Type

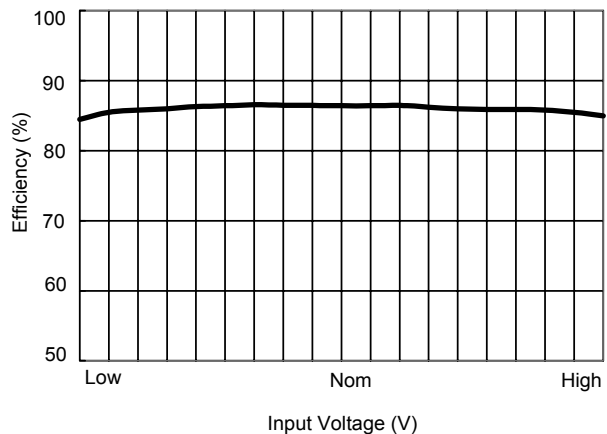
## Input Voltage Transient Rating



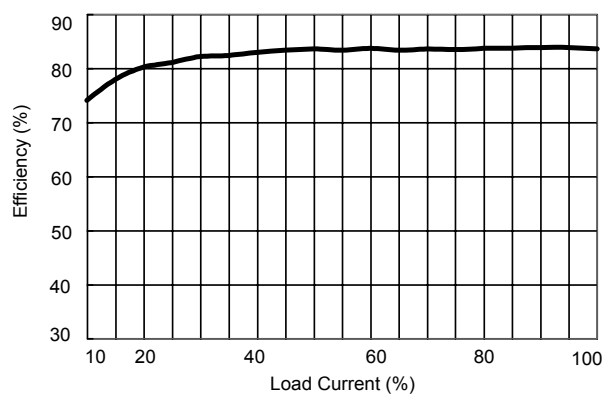
# MKW2600 / MKW2600A Series



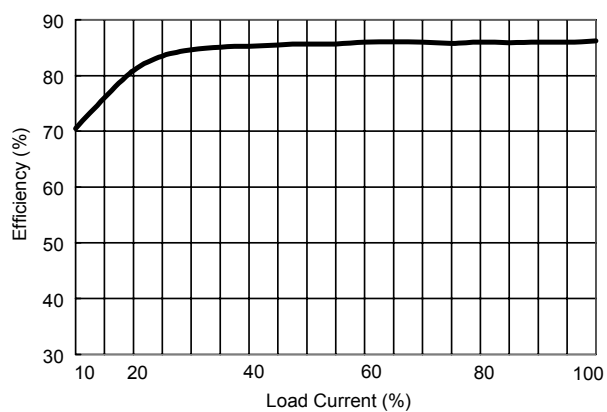
**Efficiency vs Input Voltage ( Single Output )**



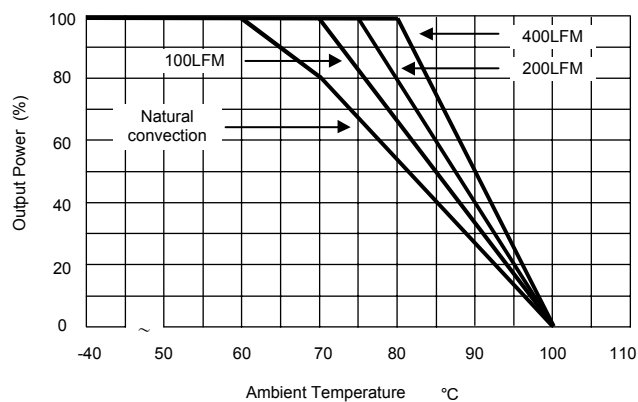
**Efficiency vs Input Voltage ( Dual Output )**



**Efficiency vs Output Load ( Single Output )**



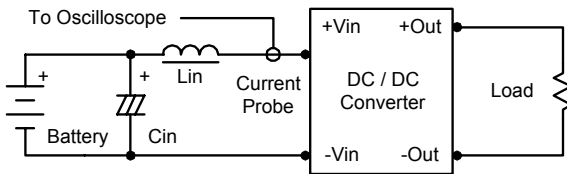
**Efficiency vs Output Load ( Dual Output )**



**Derating Curve**

## Test Configurations

### Input Reflected-Ripple Current Test Setup



Input reflected-ripple current is measured with an inductor  $L_{in}$  (4.7uH) and  $C_{in}$  (220uF, ESR < 1.0Ω at 100 KHz) to simulate source impedance.

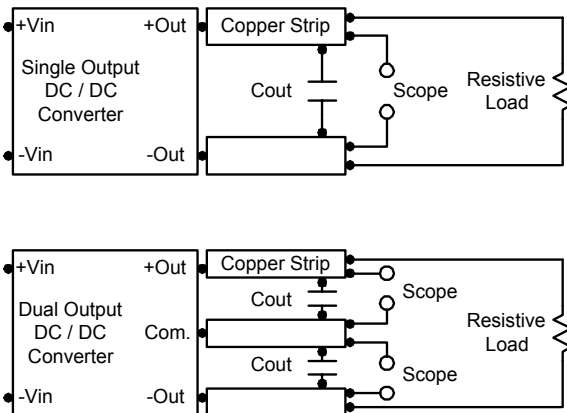
Capacitor  $C_{in}$ , offsets possible battery impedance.

Current ripple is measured at the input terminals of the module, measurement bandwidth is 0–500 KHz.

### Peak-to-Peak Output Noise Measurement Test

Use a  $C_{out}$  0.47uF ceramic capacitor.

Scope measurement should be made by using a BNC socket, measurement bandwidth is 0–20 MHz. Position the load between 50 mm and 75 mm from the DC/DC Converter.



## Design & Feature Considerations

### Remote On/Off

Positive logic remote on/off turns the module on during a logic high voltage on the remote on/off pin, and off during a logic low.

Negative logic remote on/off turns the module off during a logic low and on during a logic high.

To turn the power module on and off, the user must supply a switch to control the voltage between the on/off terminal and the -Vin terminal.

The switch can be an open collector or equivalent.

A logic low is -0.7V to 0.8V.

A logic high is 2.5V to 5.5V.

The maximum sink current at on/off terminal during a logic low is 1 mA.

The maximum allowable leakage current of the switch at on/off terminal = 2.5 to 5.5V is 50uA.

### Overcurrent Protection

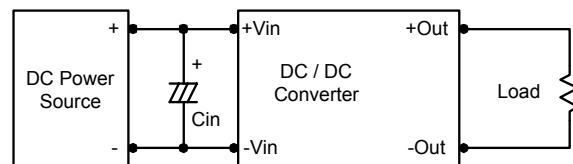
To provide protection in a fault (output overload) condition, the unit is equipped with internal current limiting circuitry and can endure current limiting for an unlimited duration. At the point of current-limit inception, the unit shifts from voltage control to current control. The unit operates normally once the output current is brought back into its specified range.

### Input Source Impedance

The power module should be connected to a low ac-impedance input source. Highly inductive source impedances can affect the stability of the power module.

In applications where power is supplied over long lines and output loading is high, it may be necessary to use a capacitor at the input to ensure startup.

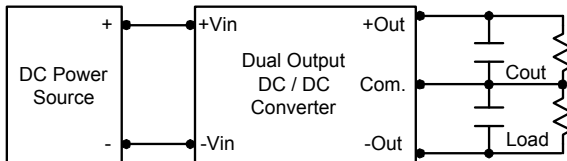
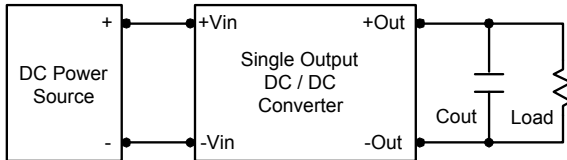
Capacitor mounted close to the power module helps ensure stability of the unit, it is recommended to use a good quality low Equivalent Series Resistance (ESR < 1.0Ω at 100 KHz) capacitor of a 10uF for the 24V and 48V input devices.



## Output Ripple Reduction

A good quality low ESR capacitor placed as close as practicable across the load will give the best ripple and noise performance.

To reduce output ripple, it is recommended to use 4.7uF capacitors at the output.



## Maximum Capacitive Load

The MKW2600 series has limitation of maximum connected capacitance at the output.

The power module may be operated in current limiting mode during start-up, affecting the ramp-up and the startup time.

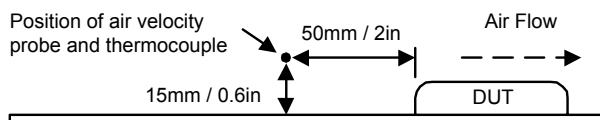
For optimum performance we recommend 220uF maximum capacitive load for dual outputs and 470uF capacitive load for single outputs.

The maximum capacitance can be found in the data.

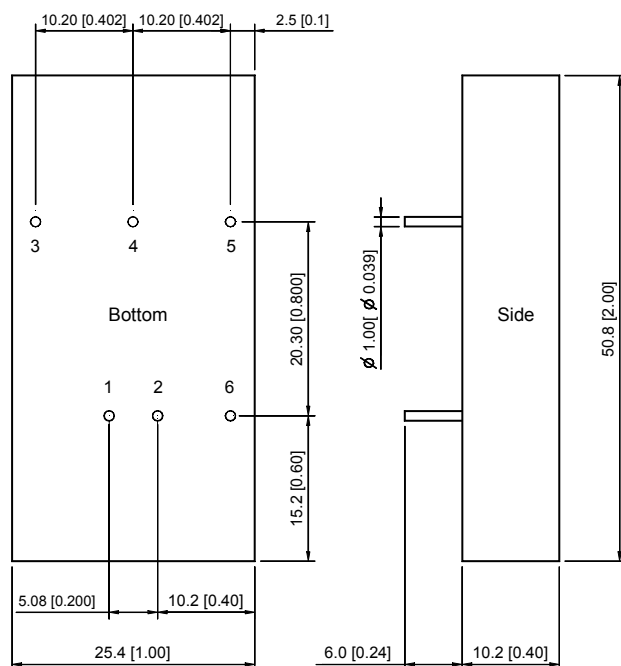
## Thermal Considerations

Many conditions affect the thermal performance of the power module, such as orientation, airflow over the module and board spacing. To avoid exceeding the maximum temperature rating of the components inside the power module, the case temperature must be kept below 100°C.

The derating curves are determined from measurements obtained in an experimental apparatus.



## Mechanical Dimensions

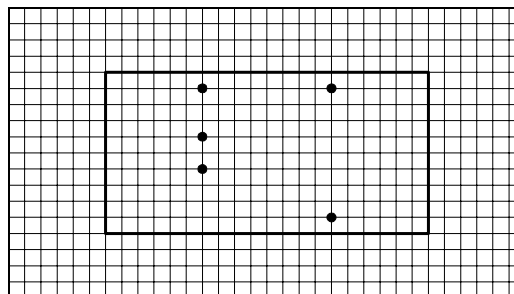


Tolerance	Millimeters	Inches
	.X±0.25	.XX±0.01
	.XX±0.25	.XXX±0.01
Pin	±0.05	±0.002

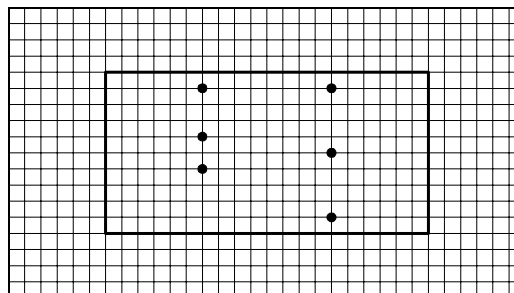
## Connecting Pin Patterns

Top View ( 2.54 mm / 0.1 inch grids )

### Single Output



### Dual Output



## Pin Connections

Pin	Single Output	Dual Output
1	+Vin	+Vin
2	-Vin	-Vin
3	+Vout	+Vout
4	No Pin	Common
5	-Vout	-Vout
6	Remote on/off (Optional)	

## Physical Characteristics

Case Size	: 50.8×25.4×10.2 mm 2.0×1.0×0.4 inches
Case Material	: Nickel-Coated Copper With Non-Conductive Baseplate
Weight	: 32g
Flammability	: UL94V-0

The MKW2600 converter is encapsulated in a low thermal resistance molding compound that has excellent resistance/electrical characteristics over a wide temperature range or in high humidity environments. The encapsulant and unit case are both rated to UL 94V-0 flammability specifications. Leads are tin plated for improved solderability.