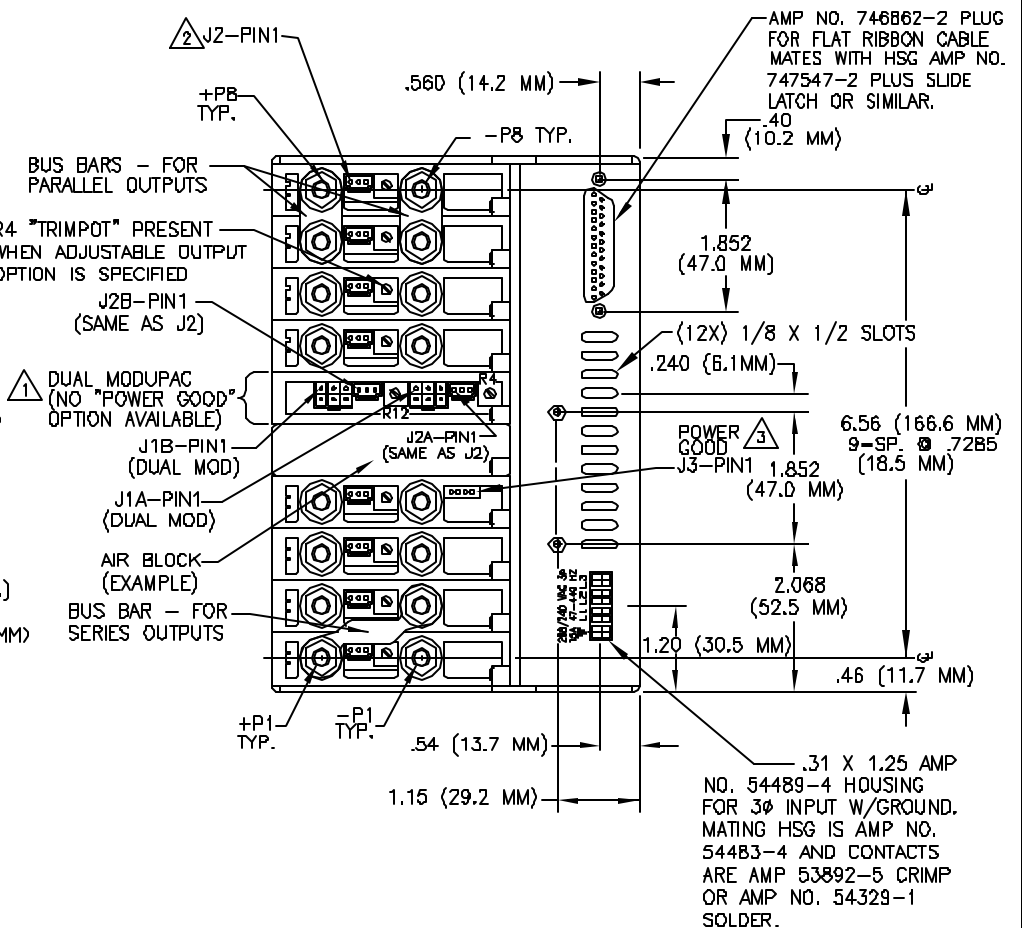
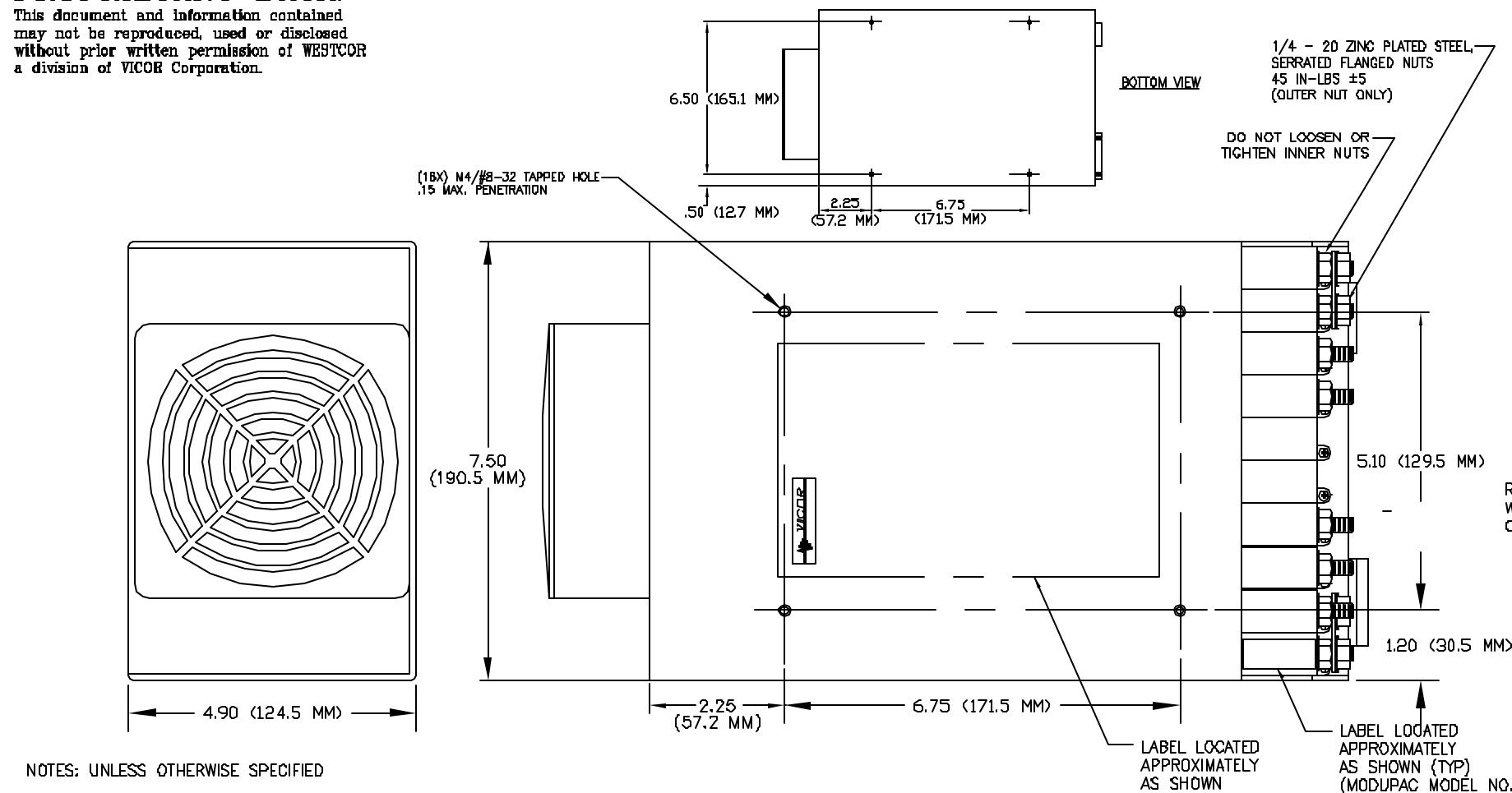


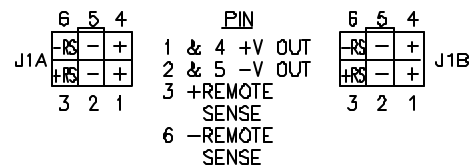
**PROPRIETARY DATA:**  
This document and information contained may not be reproduced, used or disclosed without prior written permission of WESTCOR a division of VICOR Corporation.

REVISIONS				
ECO	REV	DESCRIPTION	DATE	APPROVED
726	A	RELEASE TO PRODUCTION	11-20-97	RBD
--	A1	CHG: .600 DIM TO .250	06/06/00	LGK
1137	B	ADD REFERENCE TO VICOR WEB PAGE	3/21/02	RME
1237	C	REVERSE THE PIN NUMBERS ON (J3)	01/16/03	LGK



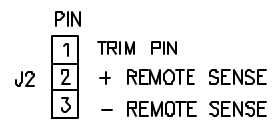
NOTES: UNLESS OTHERWISE SPECIFIED

**1 DUAL MODUPAC OUTPUT CONNECTIONS**

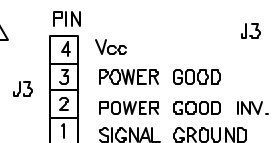



J1A & J1B REMOTE SENSE/OUTPUT CONNECTORS ARE MOLEX #39-30-1060 MINI-FIT JR. HDRS. MATING RECEPTACLE IS MOLEX #39-01-2060 HOUSING WITH #39-00-0039 TERMINALS AND 18-24 AWG STRANDED WIRE. USING MOLEX TOOL #11-01-0122.

**2 J2 "REMOTE SENSE" & "TRIM PIN ACCESS" CONNECTOR**  
HDWR: MOLEX #705-53-0002 TO MATE WITH #50-57-9403 HSG, USING #16-02-0103 TERMINALS AND 22-24 AWG STRANDED WIRE. USING MOLEX TOOL #11-01-D118.



**3 J3 "POWER GOOD" CONNECTOR WHEN "POWER GOOD" OPTION IS SPECIFIED.**  
HDWR: MOLEX #39-27-0042 TO MATE WITH HSG #39-01-0043 USING #39-00-0031 TERMINALS AND 22-28 AWG STRANDED WIRE. USING MOLEX TOOL #57005-5000.



		UNLESS OTHERWISE SPECIFIED DIMENSIONS ARE IN INCHES TOLERANCES ARE:  FRACTIONS      DECIMALS      ANGLES ± 1/32      .XX ± .01      ± 1/2" .XXX ± .005	CONTRACT NO.  — — —		<div> WESTCOR a division of VICOR Corp.</div>			
			APPROVALS	DATE				
			MATERIAL      — — —	DRAWN      S. KEITH	08/24/97			
— — —	SEE MIS	FINISH      — — —	CHECKED      D.BIGELOW	12/03/97	SIZE B	CAGE CODE OE5V2	DWG NO. 08-130080	REV C
NEXT ASSY	USED ON		APPROVED      R.B.DRABING	11/20/97				
APPLICATION		DO NOT SCALE DRAWING	DESIGNED      — — —	— — —	SCALE      NTS	FILENAME:      08-130080	SHEET      1 OF 1	