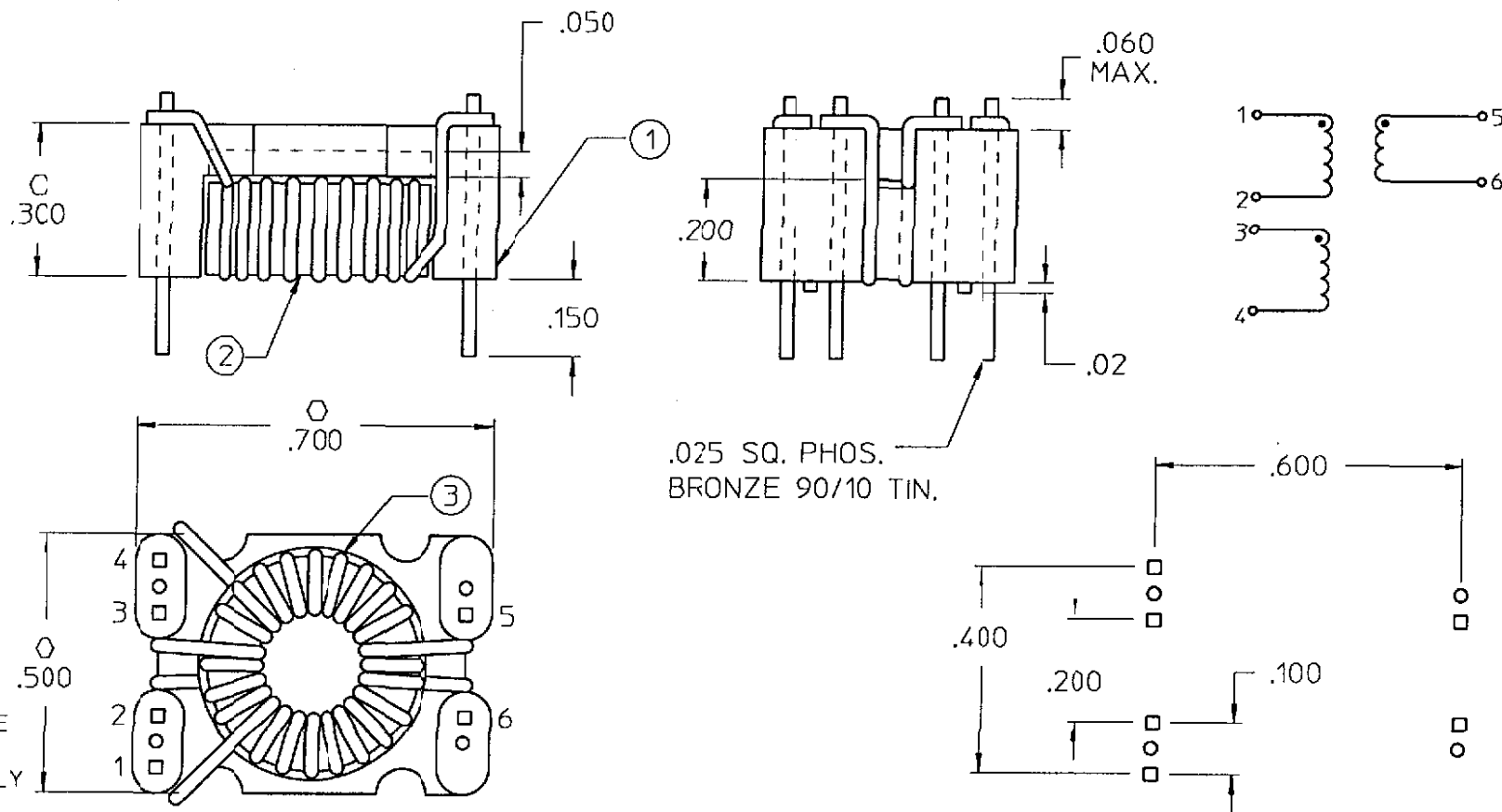


# **VICOR CONFIDENTIAL**

THIS DOCUMENT AND THE DATA DISCLOSED HEREIN OR HEREWITH IS NOT TO BE REPRODUCED, USED, OR DISCLOSED IN WHOLE OR IN PART TO ANYONE WITHOUT PERMISSION OF VICOR CORP.

REV.	DESCRIPTION	DATE	APPROVED
#1	DRAWN FOR DEVELOPMENT	DMC 4/00	JH



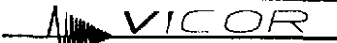

## NOTES:

1. ASSEMBLY TO BE FREE OF NICKS.
2. WINDINGS TO BE EVENLY SPACED.
3. SEE BOM 22400 FOR PARTS LIST.

PINS 1&2	3	1/2 PRI.	8T OF #29 AWG.	10' - 187	40 -50
PINS 3&4	3	1/2 PRI.	8T OF #29 AWG.	10' - 187	40 -50
PINS 5&6	3	1 SEC.	8T OF #29 AWG.	101 - 187	40 -50
TEST					
100 KHz @ 1 VAC					
ITEM NO.		WINDNG	NO OF TURNS	IND. (uH)	DC RES (m)

**COPY**

ORIGINAL  
ONLY WHEN STAMPED  
IN RED

DRAWN BY	DATE				
	4/00				
UNLESS OTHERWISE SPECIFIED DIMENSIONS ARE IN INCHES. TOLERANCES ARE:					
FRACTIONS DECIMALS ANGLES					
.1/64 .XX- .01 .1°					
.XX- .005					
THIRD ANGLE PROJECTION					
					
DO NOT SCALE DRAWING					
PR BUS ISO TRANSFORMER ASSEMBLY					
SIZE	FSCM NO.	DWG NO	REV		
B	67131	22401	# 1		
SCALE	4:1	SHEET 1 OF 1			