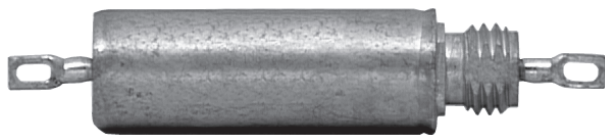


Paper Capacitors

Metal Case, Film/Foil, 10 Ampere Thru-Pass, Subminiature



FEATURES

- Bulkhead mounting
- Excellent RFI specifications
- Hermetically enclosed
- Low inductance connection
- Low insertion loss

PERFORMANCE CHARACTERISTICS

Operating Temperature: - 55°C to + 125°C.

Capacitance Range: 0.001μF to 1.0μF.

Capacitance Tolerance: ± 20%, ± 10%.

Voltage Rating: 200 WVDC to 600 WVDC.

Current Rating: 10 ampere maximum.

Dissipation Factor: 1.0% maximum.

DC Resistance: 0.01 ohm maximum.

Voltage Test: 200% of rated voltage for 1 minute.

Insulation Resistance: At + 25°C: 20,000 Megohm - Microfarads or 30,000 Megohm minimum. At + 85°C: 200 Megohm - Microfarads or 300 Megohm minimum.

ENVIRONMENTAL CHARACTERISTICS

Vibration Test (Condition A): No mechanical damage, short, open or intermittent circuits.

DC Life Test: 140% of rated voltage for 250 hours @ + 125°C. No open or short circuits. No visible damage. Maximum Δ Cap.: ± 5%. Minimum I.R. = 30% of initial limit. Maximum D.F. = 1.5%.

Moisture Resistance: MIL-STD-202, Method 106E, 10 cycles. No visible damage. Maximum Δ Cap.: ± 5%. Minimum I.R. = 30% of initial limit. Maximum D.F. = 1.5%.

Thermal Shock and Immersion Cycling: No visible damage. Maximum Δ Cap.: ± 5%. Minimum I.R. = 30% of initial limit. Maximum D.F. = 1.5%.

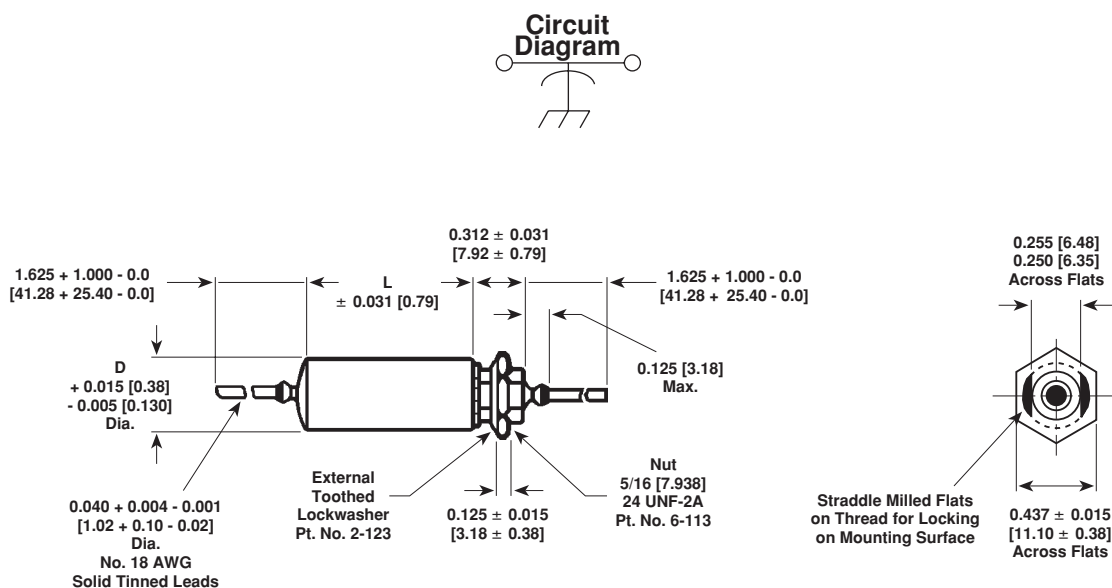
PHYSICAL CHARACTERISTICS

Lead Pull: 5 pounds (2.3 kilograms) for one minute. No physical damage.

Lead Bend: After three complete consecutive bends, no damage.

Marking: Sprague® trademark, type or part number, capacitance and voltage.

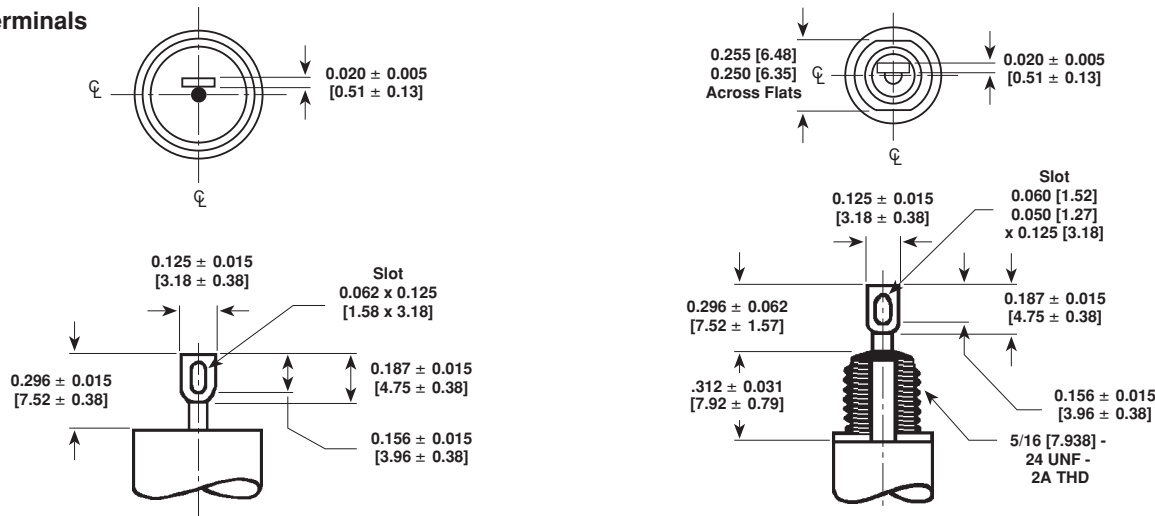
DIMENSIONS in inches [millimeters]





DIMENSIONS in inches [millimeters]

Tab Terminals



STANDARD RATINGS in inches [millimeters]

CAPACITANCE (μ F)	PART NUMBER*		NOMINAL CASE SIZE D x L
	TAB TERMINAL	WIRE LEAD	
200 WVDC			
0.047	103P473X0200T	103P473X0200S	0.400 x 0.875 [10.16 x 22.23]
0.10	103P104X0200T**	103P104X0200S	0.400 x 1.125 [10.16 x 28.58]
0.22	103P224X0200T	103P224X0200S	0.562 x 1.125 [14.27 x 28.58]
0.47	103P474X0200T**	103P474X0200S	0.562 x 1.875 [14.27 x 47.63]
1.00	103P105X0200T	103P105X0200S	0.750 x 2.125 [19.05 x 53.98]
300 WVDC			
0.047	103P473X0300T	103P473X0300S	0.400 x 1.125 [10.16 x 28.58]
0.10	103P104X0300T	103P104X0300S	0.400 x 1.375 [10.16 x 34.93]
0.22	103P224X0300T	103P224X0300S	0.562 x 1.375 [14.27 x 34.93]
0.47	103P474X0300T	103P474X0300S	0.670 x 1.875 [17.02 x 47.63]
400 WVDC			
0.047	103P473X0400T	103P473X0400S	0.400 x 1.375 [10.16 x 34.93]
0.10	103P104X0400T**	103P104X0400S*	0.562 x 1.125 [14.27 x 28.58]
0.22	103P224X0400T**	103P224X0400S*	0.562 x 1.875 [14.27 x 47.63]
0.47	103P474X0400T	103P474X0400S	0.750 x 2.125 [19.05 x 53.98]
600 WVDC			
0.001	103P102X0600T	103P102X0600S	0.400 x 0.750 [10.16 x 19.05]
0.0047	103P472X0600T**	103P472X0600S*	0.400 x 0.750 [10.16 x 19.05]
0.01	103P103X0600T**	103P103X0600S*	0.400 x 0.750 [10.16 x 19.05]
0.047	103P473X0600T	103P473X0600S	0.400 x 1.375 [10.16 x 34.93]
0.10	103P104X0600T**	103P104X0600S*	0.562 x 1.375 [14.27 x 34.93]
0.22	103P224X0600T**	103P224X0600S*	0.670 x 1.875 [17.02 x 47.63]
0.47	103P474X0600T	103P474X0600S	0.750 x 2.375 [19.05 x 60.32]

* The Part Numbers given are for capacitance tolerance of $\pm 20\%$. To specify $\pm 10\%$ tolerance, change X0 to X9.

** All standard inventoried Part Numbers will be stocked with a $\pm 10\%$ tolerance (X9).

ORDERING INFORMATION

103P
TYPE

473
CAPACITANCE

X0
CAPACITANCE
TOLERANCE

200
DC VOLTAGE
RATING

S
TERMINAL

This is expressed in picofarads. The first two digits are the significant figures. The third is the number of zeros to follow.

X0 = $\pm 20\%$
X9 = $\pm 10\%$
(Inventoried)

This is expressed in volts.

S = Wire Leads
T = Soldering Tab