



0.4-Ω Low-Voltage Dual SPDT Analog Switch

FEATURES

- Low Voltage Operation (1.8 V to 5.5 V)
- Low On-Resistance - r_{ON} : 0.4 Ω @ 2.7 V
- -69 dB OIRR @ 2.7 V, 100 kHz
- MSOP-10 Package
- ESD Protection >2000 V

BENEFITS

- Reduced Power Consumption
- High Accuracy
- Reduce Board Space
- 1.6-V Logic Compatible
- High Bandwidth

APPLICATIONS

- Cellular Phones
- Speaker Headset Switching
- Audio and Video Signal Routing
- PCMCIA Cards
- Battery Operated Systems
- Relay Replacement

DESCRIPTION

The DG2531/DG2532 is a sub 1-Ω (0.4 Ω @ 2.7 V) dual SPDT analog switches designed for low voltage applications.

The DG2531/DG2532 has on-resistance matching (less than 0.05 Ω @ 2.7 V) and flatness (less than 0.2 Ω @ 2.7 V) that are guaranteed over the entire voltage range. Additionally, low logic thresholds makes the DG2531/DG2532 an ideal interface to low voltage DSP control signals.

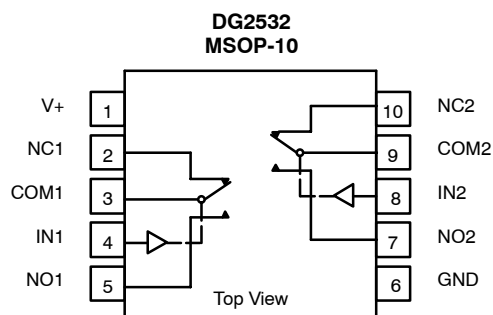
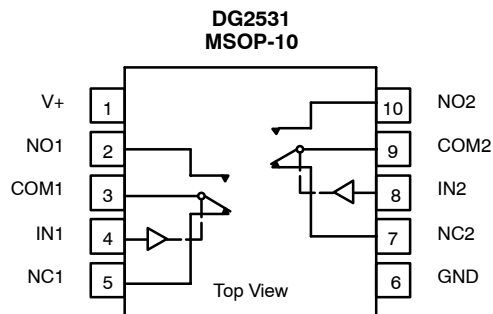
The DG2531/DG2532 has fast switching speed (on/off time @ 40 and 35 ns) with break-before-make guaranteed. In the On

condition, all switching elements conduct equally in both directions. Off-isolation and crosstalk is -69 dB @ 100 kHz.

The DG2531/DG2532 is built on Vishay Siliconix's high-density low voltage CMOS process. An epitaxial layer is built in to prevent latchup. The DG2531/DG2532 contains the additional benefit of 2,000 V ESD protection.

Packaged in space saving MSOP-10, the DG2531/DG2532 is a high performance, low r_{ON} switches for battery powered applications.

FUNCTIONAL BLOCK DIAGRAM AND PIN CONFIGURATION



TRUTH TABLE

Logic	NC1 and NC2	NO1 and NO2
0	ON	OFF
1	OFF	ON

ORDERING INFORMATION

Temp Range	Package	Part Number
-40 to 85°C	MSOP-10	DG2531DQ DG2532DQ

ABSOLUTE MAXIMUM RATINGS

Reference to GND

V+ -0.3 to +6 V

IN, COM, NC, NO^a -0.3 to (V+ + 0.3 V)

Continuous Current (NO, NC, COM) ±300 mA

Peak Current ±500 mA
(Pulsed at 1 ms, 10% duty cycle)

Storage Temperature (D Suffix) -65 to 150°C

ESD per Method 3015.7 >2 kV

Power Dissipation (Packages)^bMSOP-10^c 320 mW

Notes:

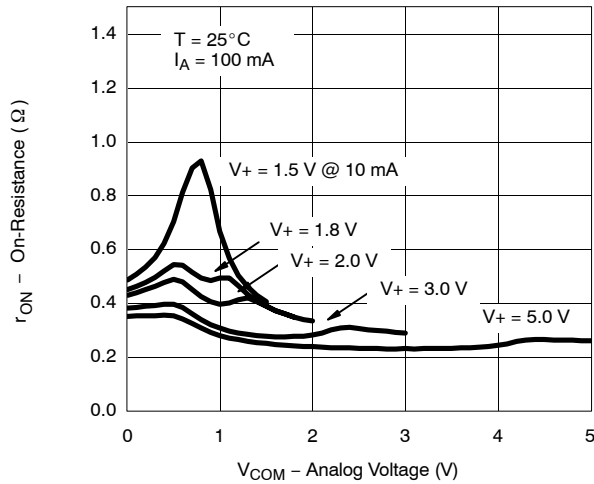
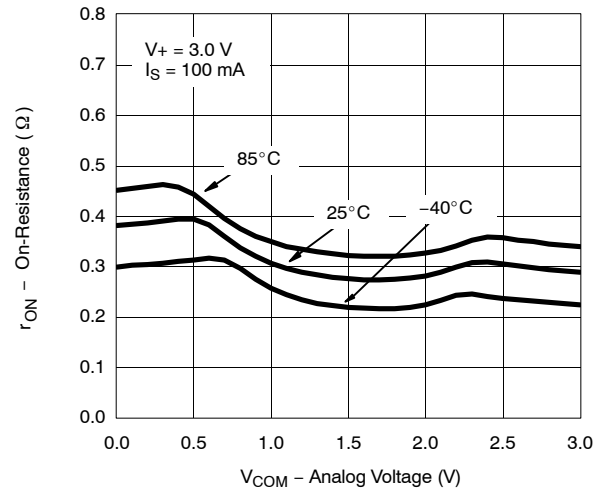
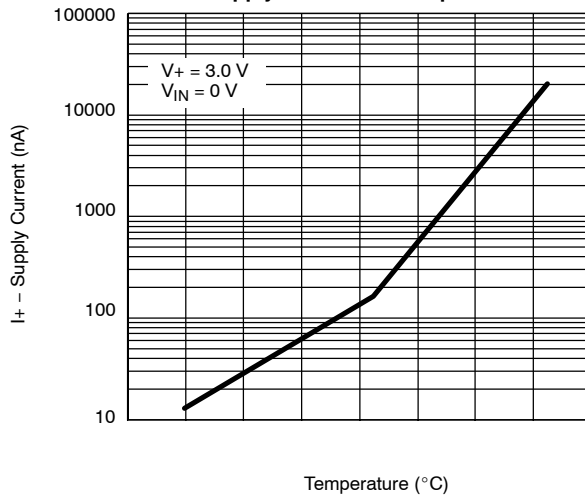
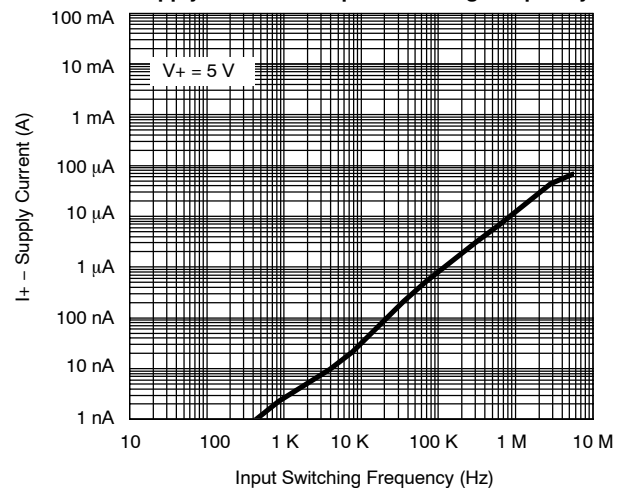
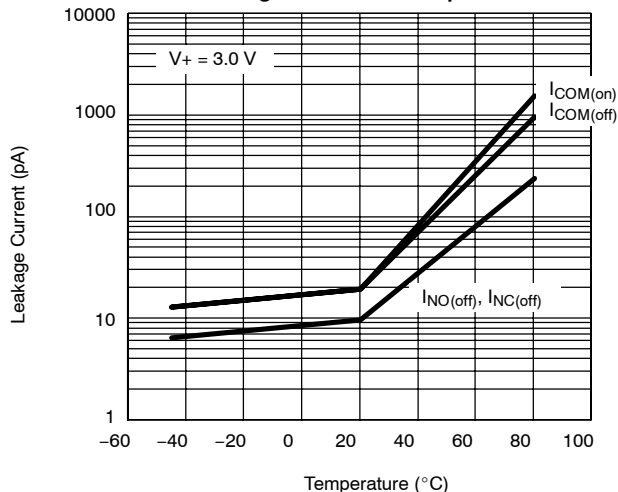
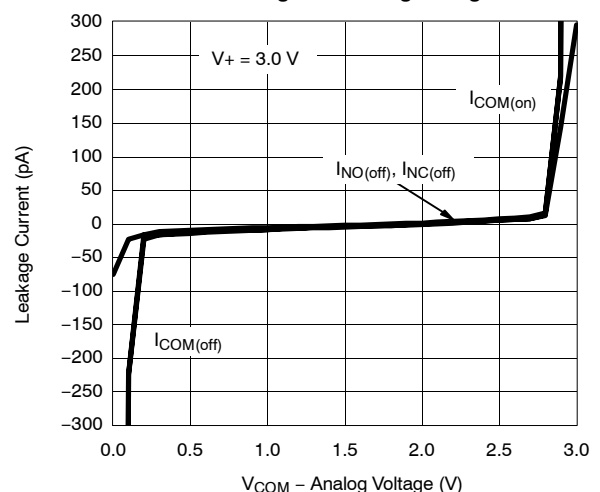
- Signals on NC, NO, or COM or IN exceeding V+ will be clamped by internal diodes. Limit forward diode current to maximum current ratings.
- All leads welded or soldered to PC Board.
- Derate 4.0 mW/°C above 70°C

Permanent damage to the device may occur when the "Absolute Maximum Ratings" are exceeded. These stress ratings do not indicate conditions for which the device is intended to be functional. Functionality is only guaranteed to the conditions specified by the parametric table within the document.

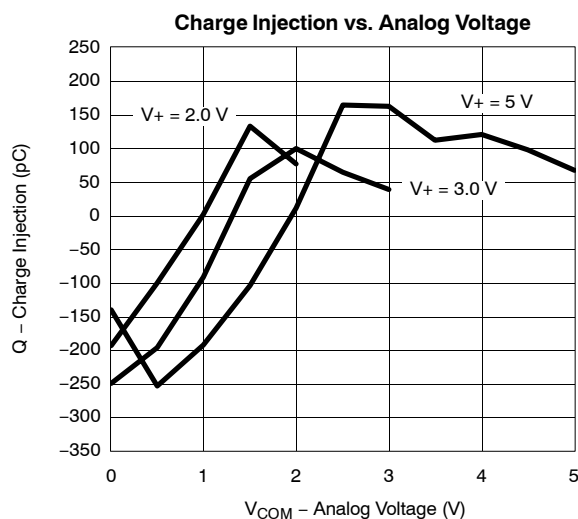
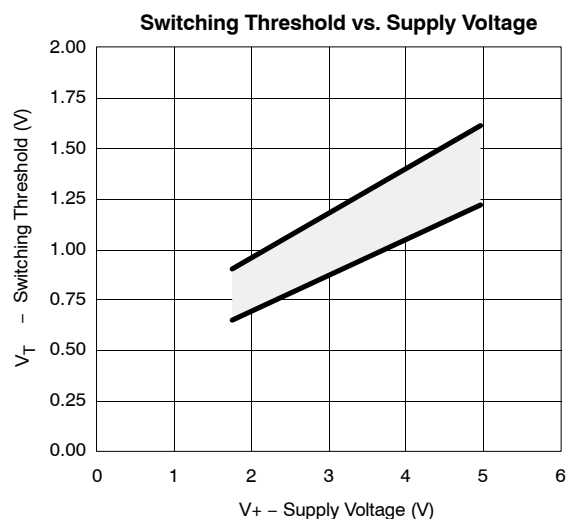
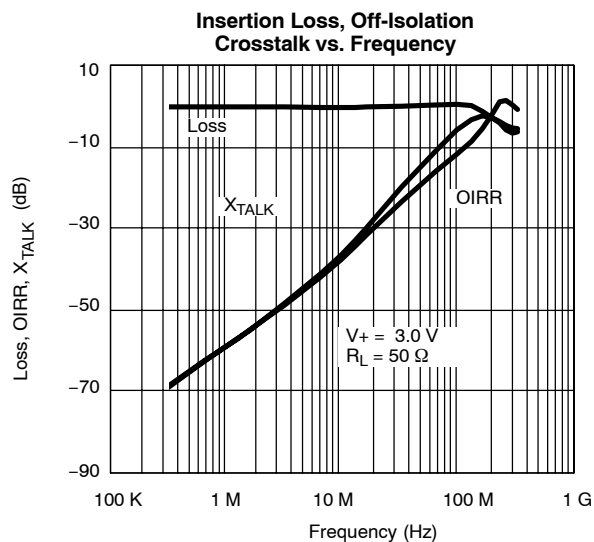
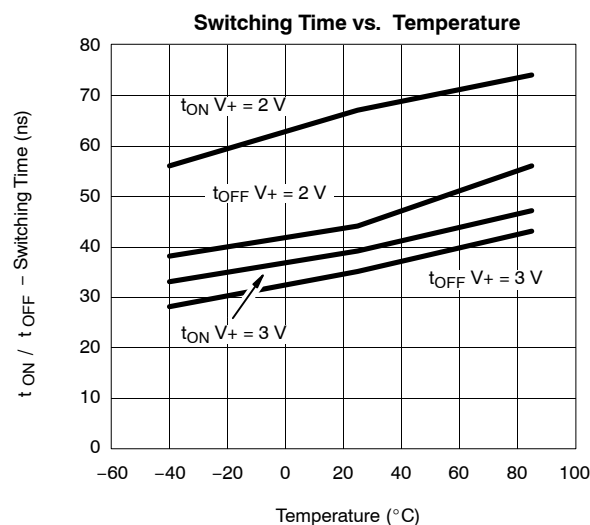
SPECIFICATIONS (V+ = 3 V)							
Parameter	Symbol	Test Conditions Otherwise Unless Specified V+ = 3 V, ±10%, VIN = 0.5 or 1.4 V ^e	Temp ^a	Limits −40 to 85°C			Unit
				Min ^b	Typ ^c	Max ^b	
Analog Switch							
Analog Signal Range ^d	VNO, VNC, VCOM		Full	0		V+	V
On-Resistance	rON	V+ = 2.7 V, VCOM = 0.6/1.5 V INO, INC = 100 mA	Room Full		0.4	0.6 0.7	Ω
rON Flatness ^d	rON Flatness		Room		0.12	0.2	
On-Resistance Match Between Channels ^d	ΔrDS(on)		Room			0.05	
Switch Off Leakage Current	INO(off), INC(off)	V+ = 3.3 V, VNO, VNC = 0.3 V/3 V VCOM = 3 V/0.3 V	Room Full	−1 −10		1 10	nA
	ICOM(off)		Room Full	−1 −10		1 10	
Channel-On Leakage Current	ICOM(on)	V+ = 3.3 V, VNO, VNC = VCOM = 0.3 V/3 V	Room Full	−1 −10		1 10	
Digital Control							
Input High Voltage ^d	VINH		Full	1.4			V
Input Low Voltage	VINL		Full			0.5	
Input Capacitance	Cin		Full		7		pF
Input Current	IINL or IINH	VIN = 0 or V+	Full	1		1	μA
Dynamic Characteristics							
Turn-On Time	tON	VNO or VNC = 2.0 V, RL = 50 Ω, CL = 35 pF	Room Full		40	70 77	ns
Turn-Off Time	tOFF		Room Full		35	65 72	
Break-Before-Make Time	td	VNO or VNC = 2.0 V, RL = 50 Ω, CL = 35 pF	Full	1	4		
Charge Injection ^d	QINJ	CL = 1 nF, VGEN = 1.5 V, RGEN = 0 Ω	Room		54		pC
Off-Isolation ^d	OIRR	RL = 50 Ω, CL = 5 pF, f = 100 KHz	Room		−69		dB
Crosstalk ^d	XTALK		Room		−69		
NO, NC Off Capacitance ^d	CNO(off)	VIN = 0 or V+, f = 1 MHz	Room		143		pF
	CNC(off)		Room		143		
Channel-On Capacitance ^d	CNO(on)		Room		403		
	CNC(on)		Room		403		
Power Supply							
Power Supply Range	V+			1.8		5.5	V
Power Supply Current	I+	VIN = 0 or V+	Full			1.0	μA

Notes:

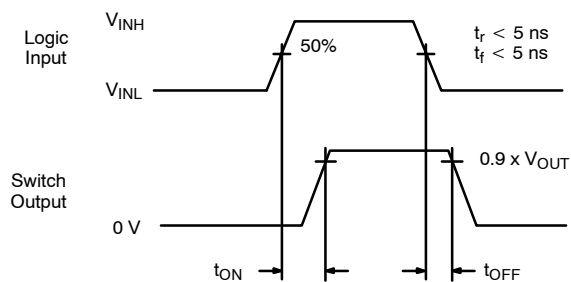
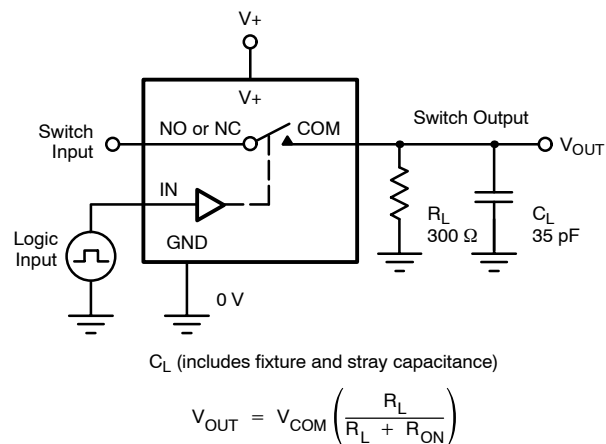
- Room = 25°C, Full = as determined by the operating suffix.
- Typical values are for design aid only, not guaranteed nor subject to production testing.
- The algebraic convention whereby the most negative value is a minimum and the most positive a maximum, is used in this data sheet.
- Guarantee by design, nor subjected to production test.
- V_{IN} = input voltage to perform proper function.

**TYPICAL CHARACTERISTICS (25°C UNLESS NOTED)** **r_{ON} vs. V_{COM} and Supply Voltage** **r_{ON} vs. Analog Voltage and Temperature (NC1)****Supply Current vs. Temperature****Supply Current vs. Input Switching Frequency****Leakage Current vs. Temperature****Leakage vs. Analog Voltage**

TYPICAL CHARACTERISTICS (25 °C UNLESS NOTED)



TEST CIRCUITS



Logic "1" = Switch On
Logic input waveforms inverted for switches that have the opposite logic sense.

FIGURE 1. Switching Time

TEST CIRCUITS

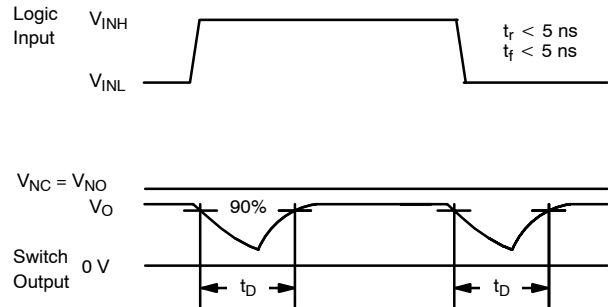
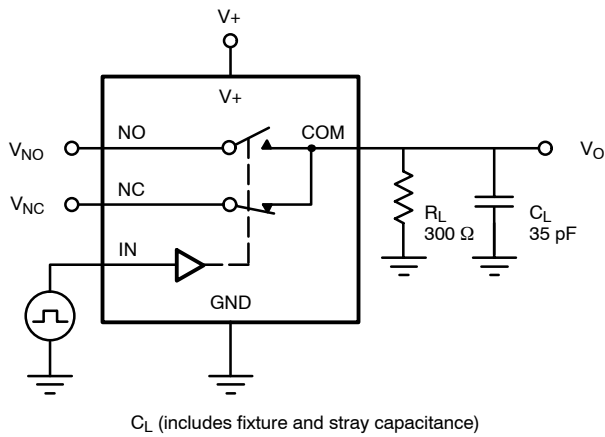
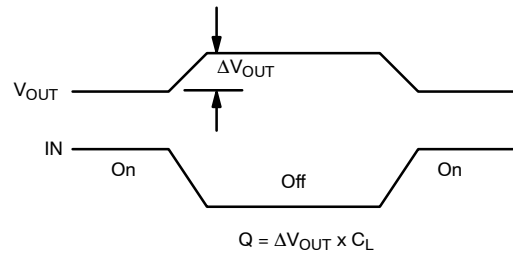
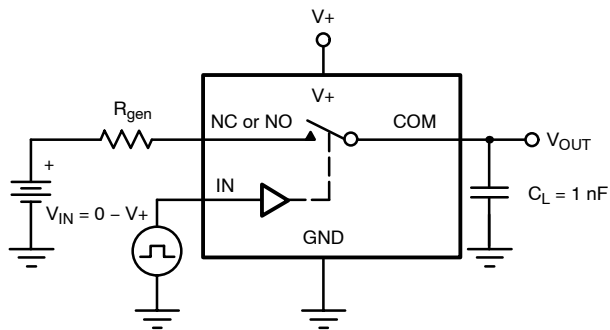


FIGURE 2. Break-Before-Make Interval



IN depends on switch configuration: input polarity determined by sense of switch.

FIGURE 3. Charge Injection

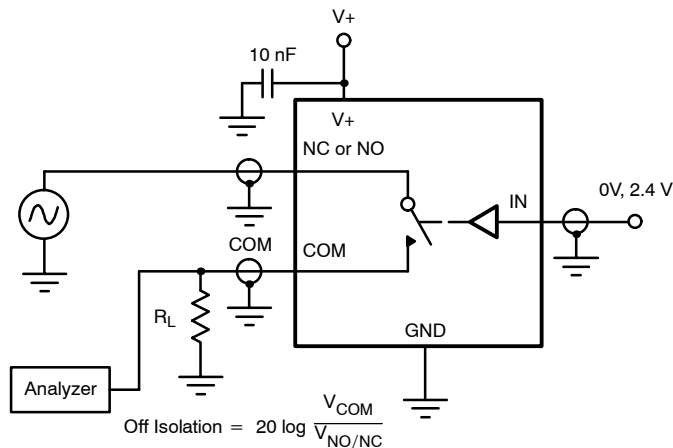


FIGURE 4. Off-Isolation

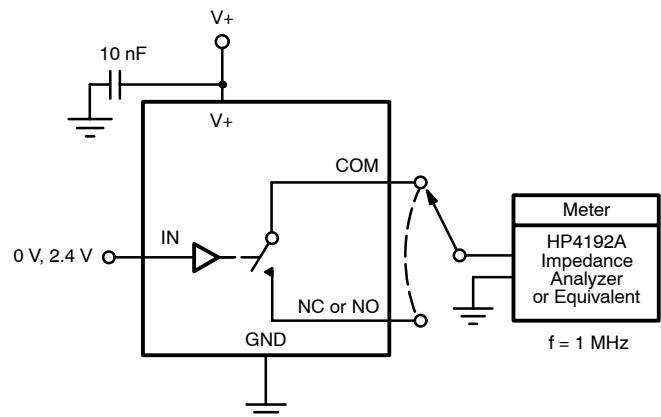


FIGURE 5. Channel Off/On Capacitance