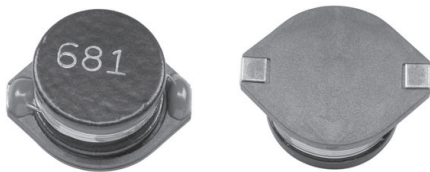




High Current, Surface Mount Inductor



FEATURES

- High energy storage.
- Low resistance.
- Tape and reel packaging for automatic handling.

ELECTRICAL SPECIFICATIONS

Inductance Range: 1.0 μ H to 1000 μ H, tested at 1.0Vrms.

Inductance Tolerance: 20%, tighter tolerances available upon request.

Operating Temperature: - 40°C to + 125°C.

Resistance to Solder Heat: 260°C for 10 seconds.

MATERIALS

Core: Ferrite.

Wire: Enamelled copper wire.

Base: LCP.

Terminal: Nickel bronze.

Adhesive: Epoxy resin.

STANDARD ELECTRICAL SPECIFICATIONS

INDUCTANCE (μ H)	TOLERANCE	TEST FREQUENCY L (KHz)	DCR MAXIMUM (Ohms)	Isat (Amps)	Irms (Amps)
1.0	$\pm 20\%$	100	0.009	20.0	8.6
2.2	$\pm 20\%$	100	0.014	16.0	7.1
3.3	$\pm 20\%$	100	0.018	14.0	6.2
5.6	$\pm 20\%$	100	0.020	12.0	5.3
10	$\pm 20\%$	100	0.031	10.0	4.3
15	$\pm 20\%$	100	0.036	8.0	4.0
22	$\pm 20\%$	100	0.047	7.0	3.5
33	$\pm 20\%$	100	0.066	5.5	3.0
47	$\pm 20\%$	100	0.086	4.5	2.6
68	$\pm 20\%$	100	0.13	3.5	2.3
100	$\pm 20\%$	100	0.19	3.0	1.8
150	$\pm 20\%$	100	0.25	2.6	1.5
220	$\pm 20\%$	100	0.38	2.4	1.2
330	$\pm 20\%$	100	0.56	1.9	1.0
470	$\pm 20\%$	100	0.85	1.4	0.82
680	$\pm 20\%$	100	1.1	1.2	0.72
1000	$\pm 20\%$	100	1.8	1.0	0.56

Inductance drop = 10% typ. at Isat
 $\Delta T = 40^\circ\text{C}$ typ. at Irms

DIMENSIONS [in inches millimeters]

A (Max.)	B (Max.)	D (Max.)	E	F	G	H	I	J
0.730 [18.54]	0.600 [15.24]	0.280 [7.11]	0.100 [2.54]	0.100 [2.54]	0.500 [12.70]	0.115 [2.92]	0.490 [12.45]	0.110 [2.79]

DESCRIPTION

IDC-7328	10 μ H	$\pm 20\%$
MODEL	INDUCTANCE VALUE	INDUCTANCE TOLERANCE

SAP PART NUMBERING GUIDELINES (INTERNAL)

I	D	C	7	3	2	8	N	B	1	0	0	M
PRODUCT FAMILY			SIZE				PACKAGE CODE		INDUCTANCE VALUE			TOL.

See the end of this data book for conversion tables