

Module No.: W05310RHC-5H

Features:

Ø5mm

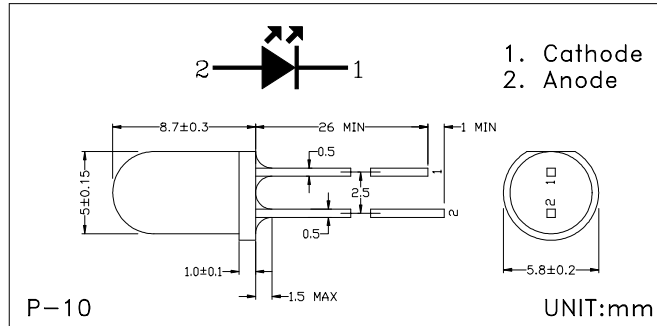
RED

Water Clear

High Bright

PIN=26mm

Dimensions



Absolute Maximum Ratings

(Ta=25°C)

Descriptions	Symbol	Value	Unit
Continuous Forward Current	IF	30	mA
Peak Forward Current *1	IFM	35	mA
Reverse Voltage	VR	5	V
Operating Temperature	Topr	-25 ~ +65	°C
Storage Temperature	Tstg	-25 ~ +85	°C
Soldering Temperature *2	Tsol	260	°C

*1 Duty ratio = 1/10, Pulse width = 0.1ms.

*2 At the position of 2mm from the bottom face of resin package within 5 sec.

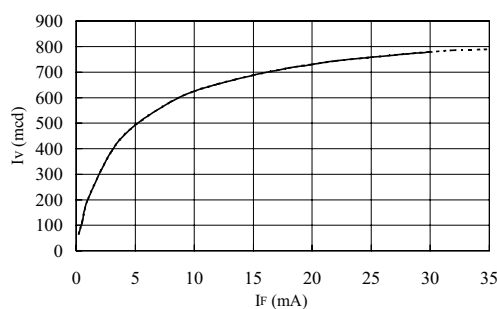
Electro-optical Characteristics

(Ta=25°C)

Descriptions	Symbol	Conditions	Min.	Typ.	Max.	Unit
Forward Voltage	VF1	IF=10μA	1.45	1.55		V
	VF2	IF=20mA		1.8	2.0	V
Luminous Intensity *3	IV	IF=20mA	385	730		mcd
Peak Emission Wavelength	λp	IF=20mA		670		nm
Spectrum Radiation Bandwidth	Δλ	IF=20mA		20		nm
Half Power Beam angle	Δθ			±10		deg.
Terminal Capacitance	Ct			25		pF
Response Frequency	fc			8		MHz

*3 Tolerance: ± 30%

Luminous Intensity vs
Forward Current



Radiation Diagram

