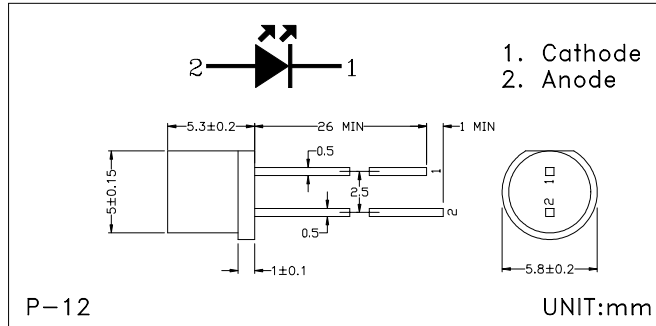


Module No.: W05312YSC

### Features:

Ø5mm  
 YELLOW  
 Water Clear  
 Super Bright  
 PIN=26mm  
 Flat Head

### Dimensions



### Absolute Maximum Ratings

(Ta=25°C)

Descriptions	Symbol	Value	Unit
Continuous Forward Current	IF	30	mA
Peak Forward Current *1	IFM	35	mA
Reverse Voltage	VR	5	V
Operating Temperature	Topr	-25 ~ +65	°C
Storage Temperature	Tstg	-25 ~ +85	°C
Soldering Temperature *2	Tsol	260	°C

\*1 Duty ratio = 1/10, Pulse width = 0.1ms.

\*2 At the position of 2mm from the bottom face of resin package within 5 sec.

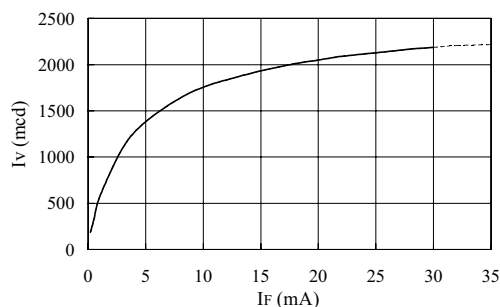
### Electro-optical Characteristics

(Ta=25°C)

Descriptions	Symbol	Conditions	Min.	Typ.	Max.	Unit
Forward Voltage	VF1	IF=10μA	1.3			V
	VF2	IF=20mA		2.1	2.4	V
Luminous Intensity *3	IV	IF=20mA	1500	2050		mcd
Peak Emission Wavelength	λp	IF=20mA		595		nm
Spectrum Radiation Bandwidth	Δλ	IF=20mA		15	20	nm
Half Power Beam Angle	Δθ			±50		deg.
Terminal Capacitance	Ct			25		pF
Response Frequency	fc			8		MHz

\*3 Tolerance: ± 30%

Luminous Intensity vs  
Forward Current



Radiation Diagram

