



SRAM Memory Card 256KB through 8MB

General Description

The WEDC SRAM Series (SRA) memory cards offer a high performance nonvolatile storage solution for code and data storage, disk caching, and write intensive mobile and embedded applications.

Packaged in PCMCIA type I or type II housing (type II for cards with extended battery backup time), the WEDC SRAM SRA series is based on 1 or 4Mbit SRAM memories, providing densities from 256 Kilobytes to 8 Megabytes.

The SRA series of SRAM memory cards requires a 5V power supply and operates at speeds to 150ns. The cards are based on advanced CMOS technology providing very low power and reliable data retention characteristics. WEDC's SRAM cards contain a rechargeable lithium battery and recharge circuitry, eliminating the need for replaceable batteries found in many SRAM cards.

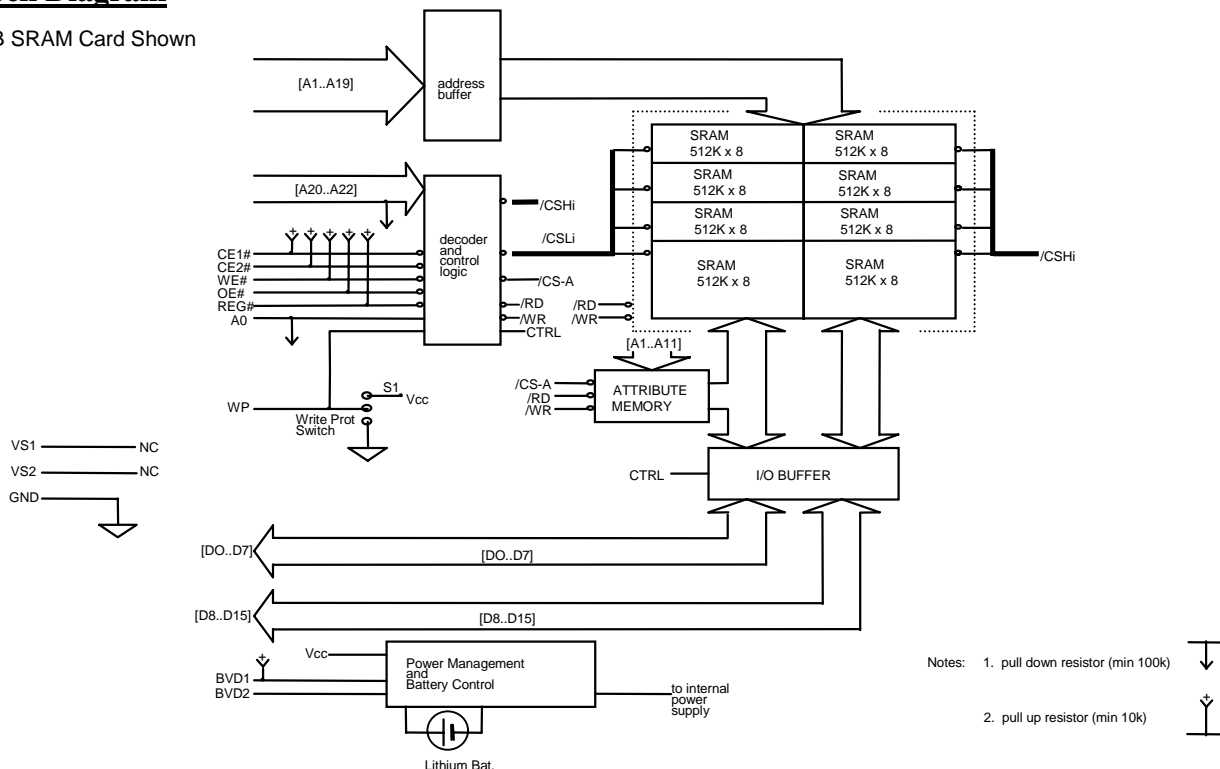
WEDC's standard cards are shipped with WEDC's SRAM Logo. Cards are also available with blank housings (no Logo). The blank housings are available in both a recessed (for label) and flat housing. Please contact WEDC sales representative for further information on Custom artwork.

Features

- High Performance SRAM memory Card
- Single 5 Volt Supply
 - (3.3V/5V operation is available as an option)
- Fast Access times: 150ns
- x8/x16 PCMCIA standard interface
- Low Power CMOS technology provides very low power and reliable data retention characteristics
 - standby current < 100µA typical
- Rechargeable Lithium battery with recharge circuitry
 - eliminates the need for replaceable batteries
 - standby current during recharge typically < 2mA
 - battery backup time
 - 7 months - type I card
 - 18 months - type II card
 typical based on 4MB (lower densities will have greater storage times)
- Unlimited write cycles, no endurance issues
- Optional Features:
 - 2KB EEPROM attribute memory containing CIS
 - Optional Hardware Write Protect switch
- PC Card Standard Type I or Type II Form Factor

Block Diagram

4MB SRAM Card Shown





SRA Series

Pinout

Pin	Signal name	I/O	Function	Active
1	GND		Ground	
2	DQ3	I/O	Data bit 3	
3	DQ4	I/O	Data bit 4	
4	DQ5	I/O	Data bit 5	
5	DQ6	I/O	Data bit 6	
6	DQ7	I/O	Data bit 7	
7	CE1#	I	Card enable 1	LOW
8	A10	I	Address bit 10	
9	OE#	I	Output enable	LOW
10	A11	I	Address bit 11	
11	A9	I	Address bit 9	
12	A8	I	Address bit 8	
13	A13	I	Address bit 13	
14	A14	I	Address bit 14	
15	WE#	I	Write Enable	LOW
16	RDY/BSY#	O	Ready/Busy	N.C.
17	Vcc		Supply Voltage	
18	Vpp1		Prog. Voltage	N.C.
19	A16	I	Address bit 16	
20	A15	I	Address bit 15	
21	A12	I	Address bit 12	
22	A7	I	Address bit 7	
23	A6	I	Address bit 6	
24	A5	I	Address bit 5	
25	A4	I	Address bit 4	
26	A3	I	Address bit 3	
27	A2	I	Address bit 2	
28	A1	I	Address bit 1	
29	A0	I	Address bit 0	
30	DQ0	I/O	Data bit 0	
31	DQ1	I/O	Data bit 1	
32	DQ2	I/O	Data bit 2	
33	WP	O	Write Potect	HIGH
34	GND		Ground	

Pin	Signal name	I/O	Function	Active
35	GND		Ground	
36	CD1#	O	Card Detect 1	LOW
37	DQ11	I/O	Data bit 11	
38	DQ12	I/O	Data bit 12	
39	DQ13	I/O	Data bit 13	
40	DQ14	I/O	Data bit 14	
41	DQ15	I	Data bit 15	
42	CE2#	I	Card Enable 2	LOW
43	VS1	O	Voltage Sense 1	N.C.
44	N.C.			
45	N.C.			
46	A17	I	Address bit 17	256KB(2)
47	A18	I	Address bit 18	512KB(2)
48	A19	I	Address bit 19	1MB(2)
49	A20	I	Address bit 20	2MB(2)
50	A21	I	Address bit 21	4MB(2)
51	Vcc		Supply Voltage	
52	Vpp2		Prog. Voltage	N.C.
53	A22		Address bit 22	8MB(2,4)
54	A23		N.C.	
55	A24		N.C.	
56	A25		N.C.	
57	VS2	O	Voltage Sense 2	N.C.
58	N.C.			
59	Wait#	O	Extended Bus Cycle	Low
60	N.C.			
61	REG#	I	Attrib Mem Select	Low
62	BVD2	O	Bat. Volt. Detect 2	
63	BVD1	O	Bat. Volt. Detect 1	(3)
64	DQ8	I/O	Data bit 8	
65	DQ9	I/O	Data bit 9	
66	DQ10	O	Data bit 10	
67	CD2#	O	Card Detect 2	LOW
68	GND		Ground	

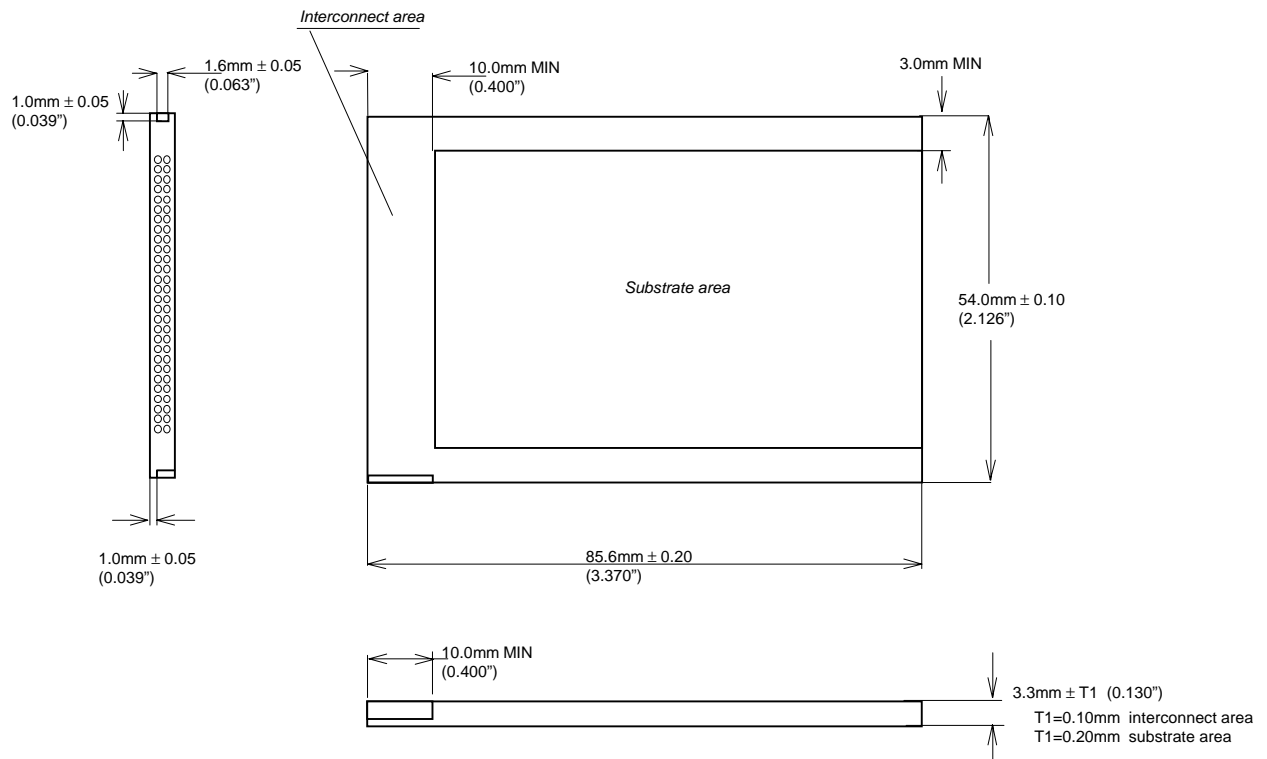
Notes:

1. CD1# and CD2# are grounded internal to PC Card.
2. Shows density for which specified address bit is MSB. Higher order address bits are no connects (i.e., 1MB A19 is MSB, A20 - A21 are NC).
3. BVD1 is an open drain output with a 10K ohm internal pull-up resistor.
4. Address bit 22 is used for the 8MB cards as well as the 6MB Cards.

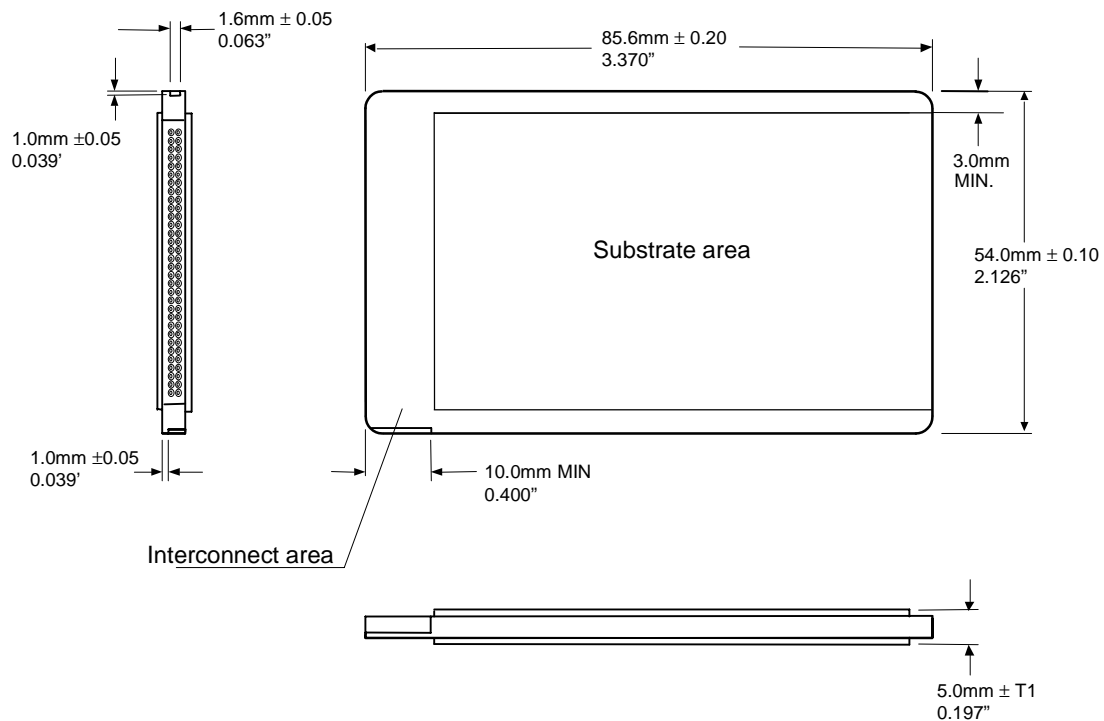


Mechanical

Type I



Type II





Card Signal Description

Symbol	Type	Name and Function
A0 - A25	INPUT	ADDRESS INPUTS: A0 through A25 enable direct addressing of up to 64MB of memory on the card. Signal A0 is not used in word access mode. A25 is the most significant bit. (address pins used are based on card density, see pinout for highest used address pin)
DQ0 - DQ15	INPUT/OUTPUT	DATA INPUT/OUTPUT: DQ0 THROUGH DQ15 constitute the bi-directional databus. DQ0 - DQ7 constitute the lower (even) byte and DQ8 - DQ15 the upper (odd) byte. DQ15 is the MSB.
CE1#, CE2#	INPUT	CARD ENABLE 1 AND 2: CE1# enables even byte accesses, CE2# enables odd byte accesses. Multiplexing A0, CE1# and CE2# allows 8-bit hosts to access all data on DQ0 - DQ7.
OE#	INPUT	OUTPUT ENABLE: Active low signal enabling read data from the memory card.
WE#	INPUT	WRITE ENABLE: Active low signal gating write data to the memory card.
RDY/BSY#	OUTPUT	READY/BUSY OUTPUT: Not used for SRAM cards
CD1#, CD2#	OUTPUT	CARD DETECT 1 and 2: Provide card insertion detection. These signals are connected to ground internally on the memory card. The host socket interface circuitry shall supply 10K-ohm or larger pull-up resistors on these signal pins.
WP	OUTPUT	WRITE PROTECT: Follows hardware Write Protect Switch. When Switch is placed in on position, signal is pulled high (10K ohm). When switch is off signal is pulled low.
VPP1, VPP2	N.C.	PROGRAM/ERASE POWER SUPPLY: Not used for SRAM cards.
VCC		CARD POWER SUPPLY: 5.0V for all internal circuitry.
GND		GROUND: for all internal circuitry.
REG#	INPUT	ATTRIBUTE MEMORY SELECT : only used with cards built with optional attribute memory.
RST	INPUT	RESET: Not used for SRAM cards
WAIT#	OUTPUT	WAIT: This signal is pulled high internally for compatibility. No wait states are generated.
BVD1, BVD2	OUTPUT	BATTERY VOLTAGE DETECT: Provides status of Battery voltage. BVD2 = Voh (battery voltage is guaranteed to retain data) BVD2 = Vol, BVD1 = Voh (data is valid, battery recharge required) BVD2 = BVD1 = Vol (data may no longer be valid, battery requires extended recharge)
VS1, VS2	OUTPUT	VOLTAGE SENSE: Notifies the host socket of the card's VCC requirements. VS1 and VS2 are open to indicate a 5V, 16 bit card has been inserted.
RFU		RESERVED FOR FUTURE USE
N.C.		NO INTERNAL CONNECTION TO CARD: pin may be driven or left floating

FUNCTIONAL TRUTH TABLE

READ function

Function Mode	/CE2	/CE1	A0	/OE	/WE
Standby Mode	H	H	X	X	X
Byte Access (8 bits)	H	L	L	L	H
	H	L	H	L	H
Word Access (16 bits)	L	L	X	L	H
Odd-Byte Only Access	L	H	X	L	H

Common Memory

/REG	D15-D8	D7-D0
X	High-Z	High-Z
H	High-Z	Even-Byte
H	High-Z	Odd-Byte
H	Odd-Byte	Even-Byte
H	Odd-Byte	High-Z

Attribute Memory

/REG	D15-D8	D7-D0
X	High-Z	High-Z
L	High-Z	Even-Byte
L	High-Z	Not Valid
L	Not Valid	Even-Byte
L	Not Valid	High-Z

WRITE function

Standby Mode	H	H	X	X	X
Byte Access (8 bits)	H	L	L	H	L
	H	L	H	H	L
Word Access (16 bits)	L	L	X	H	L
Odd-Byte Only Access	L	H	X	H	L

X	X	X
H	X	Even-Byte
H	X	Odd-Byte
H	Odd-Byte	Even-Byte
H	Odd-Byte	X

X	X	X
L	X	Even-Byte
L	X	X
L	X	Even-Byte
L	X	X

**Absolute Maximum Ratings** ⁽²⁾

Operating Temperature TA (ambient)	
Commercial	0°C to +60 °C
Industrial	-40°C to +85 °C
Storage Temperature	
Commercial	0°C to +60 °C
Industrial	-40°C to +85 °C
Voltage on any pin relative to VSS	-0.5V to VCC+0.5V (1)
VCC supply Voltage relative to VSS	-0.5V to +7.0V

Notes:

(1) During transitions, inputs may undershoot to -2.0V or overshoot to VCC +2.0V for periods less than 20ns.

(2) Stress greater than those listed under "Absolute Maximum ratings" may cause permanent damage to the device. This is a stress rating only and functional operation at these or any other conditions greater than those indicated in the operational sections of this specification is not implied. Exposure to absolute maximum rating conditions for extended periods may affect reliability.

DC Characteristics ⁽¹⁾

CMOS Test Conditions: VIL = VSS ± 0.2V, VIH = VCC ± 0.2V

Sym	Parameter	Density	Notes	Min	Typ ⁽³⁾	Max	Units	Test Conditions
ICC	VCC Active Current	64KB	1		90	180	mA	VCC = 5.25V tcycle = 150ns
		128KB			90	180		
		256KB			90	180		
		512KB			90	180		
		1MB to 8MB			110	190		
ICCS	VCC Standby Current	All	2,4	< 0.1	< 1	10	mA	VCC = 5.25V Control Signals = VCC
ILI	Input Leakage Current	All	5,6			±20	µA	VCC = VCCMAX Vin = VCC or VSS
ILO	Output Leakage Current	All	6			±20	µA	VCC = VCCMAX Vout = VCC or VSS
VIL	Input Low Voltage	All	6	0		0.8	V	
VIH	Input High Voltage	All	6	3.85		VCC +0.5	V	
VOL	Output Low Voltage	All	6			0.4	V	IOL = 3.2mA
VOH	Output High Voltage	All	6	VCC- 0.4		VCC	V	IOH = -2.0mA

Notes:

1. All currents are for x16 mode and are RMS values unless otherwise specified.
2. Control Signals: CE₁#, CE₂#, OE#, WE#, REG#.
3. Typical: VCC = 5V, T = +25°C.
4. ICCS includes battery recharge current. Value depends on battery discharge level. ICCS min is specified for fully charged battery. ICCS typical value is specified for battery discharge to 2.7V. ICCS max is specified for a fully discharged battery (0V). Battery will recharge to 1.5V in 20 sec.
5. Values are the same for byte and word wide modes for all card densities.
6. Exceptions: Leakage currents on CE₁#, CE₂#, OE#, REG# and WE# will be < 500 µA when VIN = GND due to internal pull-up resistors.

Battery Characteristics

			SRA11-14	SRA01-04		Units	Conditions
Parameter	Density	Notes	Type I	Type I	Type II		
Battery Life	All	(1)	min 10	min 10		years	Normal operation, T=25°C
Battery Backup Time	256KB	(2)	-	24	60	months (typical)	T=25°C Battery backup time is a calculated value and is not guaranteed. This should not be used to schedule battery recharging.
	512KB, 1MB		32	18	45		
	2MB		22	12	30		
	4MB		12	7	17		
	6MB		12	7	17		
	8MB		-	-	12		

Notes:

1. Battery Life refers to functional lifetime of battery.
2. Battery backup time is density and temperature dependent.



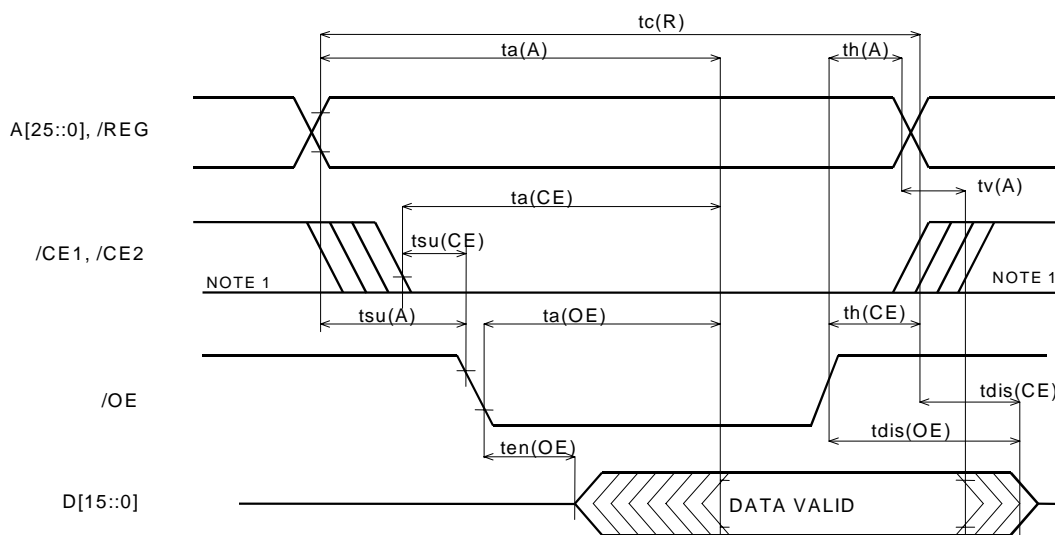
AC Characteristics

Read Timing Parameters

SYM (PCMCIA)	Parameter	150ns		Unit
		Min	Max	
t_{RC}	Read Cycle Time	150		ns
$t_a(A)$	Address Access Time		150	ns
$t_a(CE)$	Card Enable Access Time		150	ns
$t_a(OE)$	Output Enable Access Time		75	ns
$t_{su}(A)$	Address Setup Time	20		ns
$t_{su}(CE)$	Card Enable Setup Time	0		ns
$t_h(A)$	Address Hold Time	20		ns
$t_h(CE)$	Card Enable Hold Time	20		ns
$t_v(A)$	Output Hold from Address Change	0		ns
$t_{dis}(CE)$	Output Disable Time from CE#		75	ns
$t_{dis}(OE)$	Output Disable Time from OE#		75	ns
$t_{dis}(CE)$	Output Enable Time from CE#	5		ns
$t_{dis}(OE)$	Output Enable Time from OE#	5		ns

Note: AC timing diagrams and characteristics are guaranteed to meet or exceed PCMCIA 2.1 specifications.

Read Timing Diagram



Note: Signal may be high or low in this area.

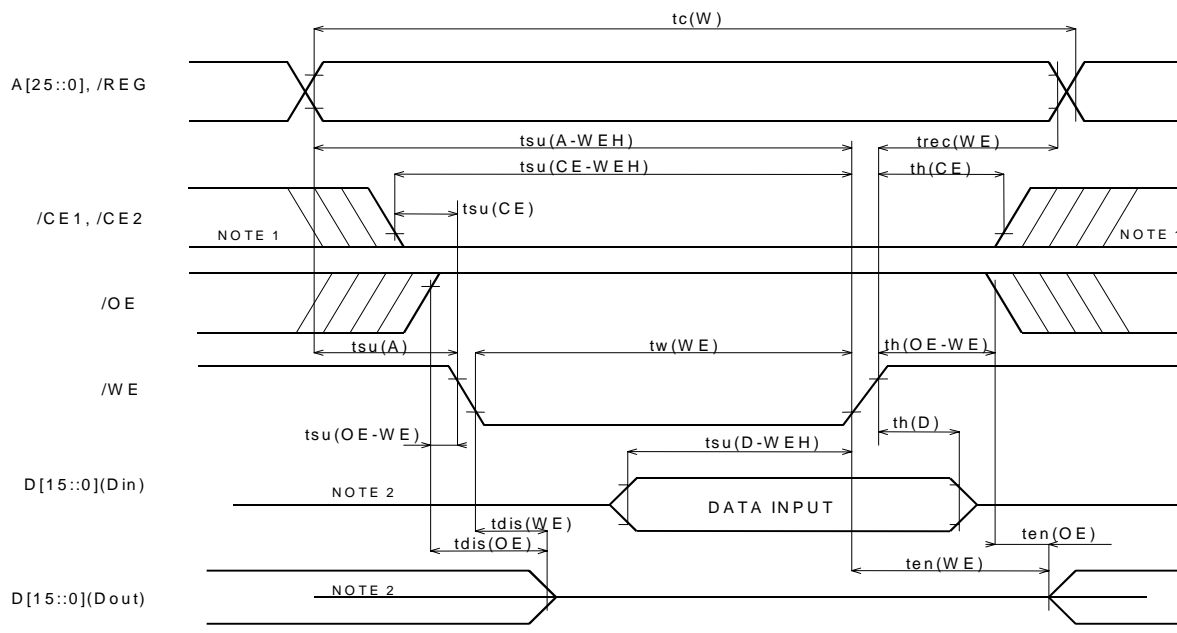


Write Timing Parameters

SYM (PCMCIA)	Parameter	150ns		Unit
		Min	Max	
t_{cW}	Write Cycle Time	150		ns
$t_w(WE)$	Write Pulse Width	80		ns
$t_{su}(A)$	Address Setup Time	20		ns
$t_{su}(A-WEH)$	Address Setup Time for WE#	100		ns
$t_{su}(CE-WEH)$	Card Enable Setup Time for WE#	100		ns
$t_{su}(D-WEH)$	Data Setup Time for WE#	50		ns
$t_h(D)$	Data Hold Time	20		ns
$t_{rec}(WE)$	Write Recover Time	20		ns
$t_{dis}(WE)$	Output Disable Time from WE#		75	ns
$t_{dis}(OE)$	Output Disable Time from OE#		75	ns
$t_{en}(WE)$	Output Enable Time from WE#	5		ns
$t_{dis}(OE)$	Output Enable Time from OE#	5		ns
$t_{su}(OE-WE)$	Output Enable Setup from WE#	10		ns
$t_h(OE-WE)$	Output Enable Hold from WE#	10		ns
$t_{su}(CE)$	Card Enable Setup Time from OE#	0		ns
$t_h(CE)$	Card Enable Hold Time	20		ns

Note: AC timing diagrams and characteristics are guaranteed to meet or exceed PCMCIA 2.1 specifications.

Write Timing Diagram



Notes:

- Signal may be high or low in this area.
- When the data I/O pins are in the output state, no signals shall be applied to the data pins (D15 - D0) by the host system.



PRODUCT MARKING

WED 8P512SRA0100C15 C995 9915

EDI

Date code

Lot code / trace number

Part number

Company Name

Note:

Some products are currently marked with our pre-merger company name/acronym (EDI). During our transition period, some products will also be marked with our new company name/acronym (WED). Starting October 2001 all PCMCIA products will be marked only with the WED prefix.

PART NUMBERING

8 P 512 SRA01 00 C 15

Card access time

15	150ns
25	250ns

Temperature range

C	Commercial	0°C to +70°C
I	Industrial	-40°C to +85°C

Packaging option

00	Standard, type 1
----	------------------

Card family and version

- See Card Family and Version Info. for details (next page)

Card capacity

512	512KB
-----	-------

PC card

P	Standard PCMCIA
R	Ruggedized PCMCIA

Card technology

7	FLASH
8	SRAM



Ordering Information

8P XXX SRA YY SS T ZZ

where

XXX:	256*	256KB
	512*	512KB
	001	1MB
	002	2MB
	004	4MB
	006	6MB
	008*	8MB

* = Capacities available only in SRA01-SRA04

YY:	01	no attribute memory, no Write Protect Switch
	02	with attribute memory, no Write Protect Switch
	03	with Write Protect Switch, no attribute memory
	04	with attribute memory, with Write Protect Switch
	11	Extended Battery Backup Time, no attribute memory, no Write Protect Switch
	12	Extended Battery Backup Time, with attribute memory, no Write Protect Switch
	13	Extended Battery Backup Time, with Write Protect Switch, no attribute memory
	14	Extended Battery Backup Time, with attribute memory, with Write Protect Switch
SS:	00	WEDC SRAM Logo Type I
	01	Blank Housing, Type I
	02	Blank Housing, Type I Recessed
	03	WEDC SRAM Logo, Type II (8MB and extended battery backup time)
	04	Blank Housing, Type II (8MB and extended battery backup time)
	05	Blank Housing, Type II Recessed (8MB and extended battery backup time)
T:	C	Commercial
	I	Industrial
ZZ:	15	150ns



REVISION HISTORY		
Date of revision	Version	Description
23-Dec-98	-001	Initial release
7-Feb-99	-002	page 5: 10 years to: min 10 years
May-99	-003	Company/Logo change
28-Sep-99	-004	Revised capacities and Edited Pinout
1-Jun-00	-005	Added Page 8, Changed Page Header Added SRA11-14 to Ordering Info, Added SRA11-14 to Battery Info
6-Feb-02	-006	Changed Page Header

Filename: SRA Dsht Rev 6.ppt

White Electronic Designs Corporation

One Research Drive, Westborough, MA 01581, USA

tel: (508) 366 5151

fax: (508) 836 4850

www.whiteedc.com

**WHITE ELECTRONIC DESIGNS**