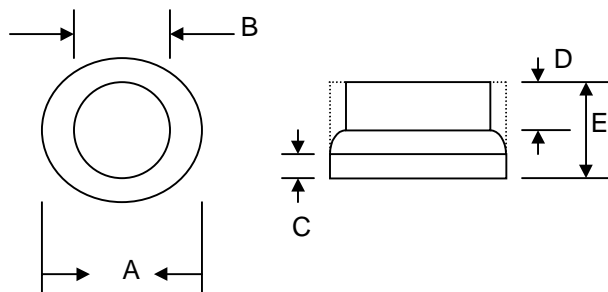


Features

- Diffused Junction
- Low Leakage
- Low Cost
- High Surge Current Capability
- Die Size 164 mil HEX



Mechanical Data

- Case: Protected with Silicon Rubber
- Terminal: Slug, Cu with Ag Plated
- Polarity: Indicated by Large Slug On Cathode Side
- Mounting Position: Any

C25		
Dim	Min	Max
A	—	5.46
B	—	4.82
C	0.75	—
D	1.0	—
E	—	2.2
All Dimensions in mm		

Maximum Ratings and Electrical Characteristics @T_A=25°C unless otherwise specified

Single Phase, half wave, 60Hz, resistive or inductive load.
 For capacitive load, derate current by 20%.

Characteristic	Symbol	C25A	C25B	C25D	C25G	C25J	C25K	C25M	Unit
Peak Repetitive Reverse Voltage Working Peak Reverse Voltage DC Blocking Voltage	V _{RRM} V _{VRWM} V _R	50	100	200	400	600	800	1000	V
RMS Reverse Voltage	V _{R(RMS)}	35	70	140	280	420	560	700	V
Average Rectified Output Current @T _C = 150°C	I _O	25							A
Non-Repetitive Peak Forward Surge Current 8.3ms Single half sine-wave superimposed on rated load (JEDEC Method)	I _{FSM}	400							A
Forward Voltage @I _F = 50A	V _{FM}	1.08							V
Peak Reverse Current At Rated DC Blocking Voltage @T _A = 25°C	I _{RM}	3.0							μA
Typical Thermal Resistance Junction to Ambient	R _{θJA}	26							K/W
Operating and Storage Temperature Range	T _J , T _{STG}	-40 to +150							°C

*Glass passivated forms are available upon request

ORDERING INFORMATION

Product No.	Package Type	Shipping Quantity
C25A	5.5mm Cell	10000 Units/Box
C25B	5.5mm Cell	10000 Units/Box
C25D	5.5mm Cell	10000 Units/Box
C25G	5.5mm Cell	10000 Units/Box
C25J	5.5mm Cell	10000 Units/Box
C25K	5.5mm Cell	10000 Units/Box
C25M	5.5mm Cell	10000 Units/Box

Shipping quantity given is for minimum packing quantity only. For minimum order quantity, please consult the Sales Department.

Won-Top Electronics Co., Ltd (WTE) has checked all information carefully and believes it to be correct and accurate. However, WTE cannot assume any responsibility for inaccuracies. Furthermore, this information does not give the purchaser of semiconductor devices any license under patent rights to manufacturer. WTE reserves the right to change any or all information herein without further notice.

WARNING: DO NOT USE IN LIFE SUPPORT EQUIPMENT. WTE power semiconductor products are not authorized for use as critical components in life support devices or systems without the express written approval.

Won-Top Electronics Co., Ltd.

No. 44 Yu Kang North 3rd Road, Chine Chen Dist., Kaohsiung, Taiwan

Phone: 886-7-822-5408 or 886-7-822-5410

Fax: 886-7-822-5417

Email: sales@wontop.com

Internet: <http://www.wontop.com>

We power your everyday.